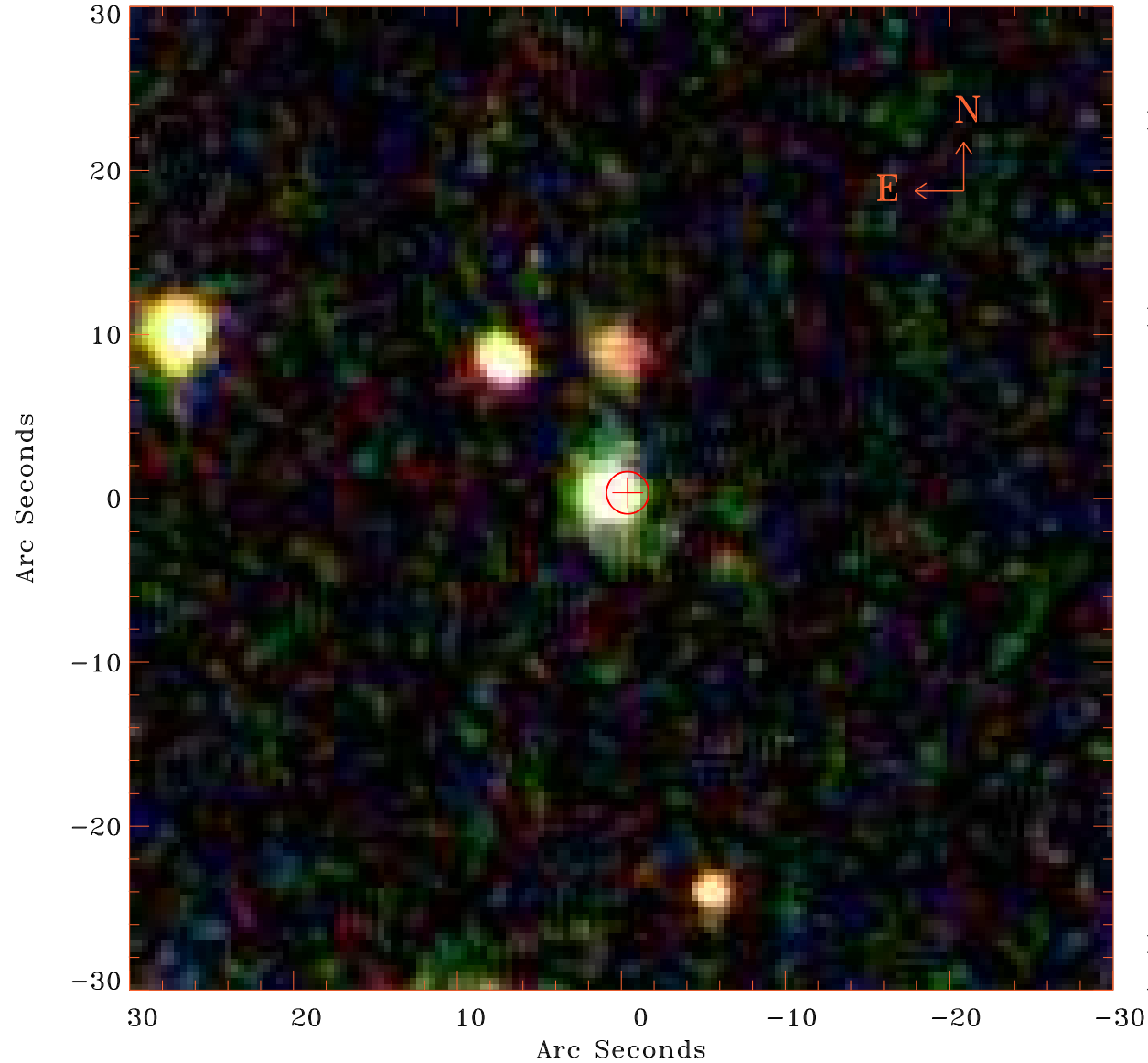


# EPIC source finding chart V10.0



Principal Investigator :

Ms Jeanette Gladstone

XMM target name :

NGC 4490

OBS ID : 556300101

Source number : 13

X-ray coordinates :

$\alpha$  : 12 31 04.27

$\delta$  : +41 44 00.8

Center coordinates :

$\alpha$  : 12 31 04.27

$\delta$  : +41 44 00.9

Plate reference :

Origin : SDSS

Color coding :

i band ●

r band ●

g band ●

Error circle :

$R_{90}$  (") : 1.3

XMM SSC

Apr 23 02:16:39 2019