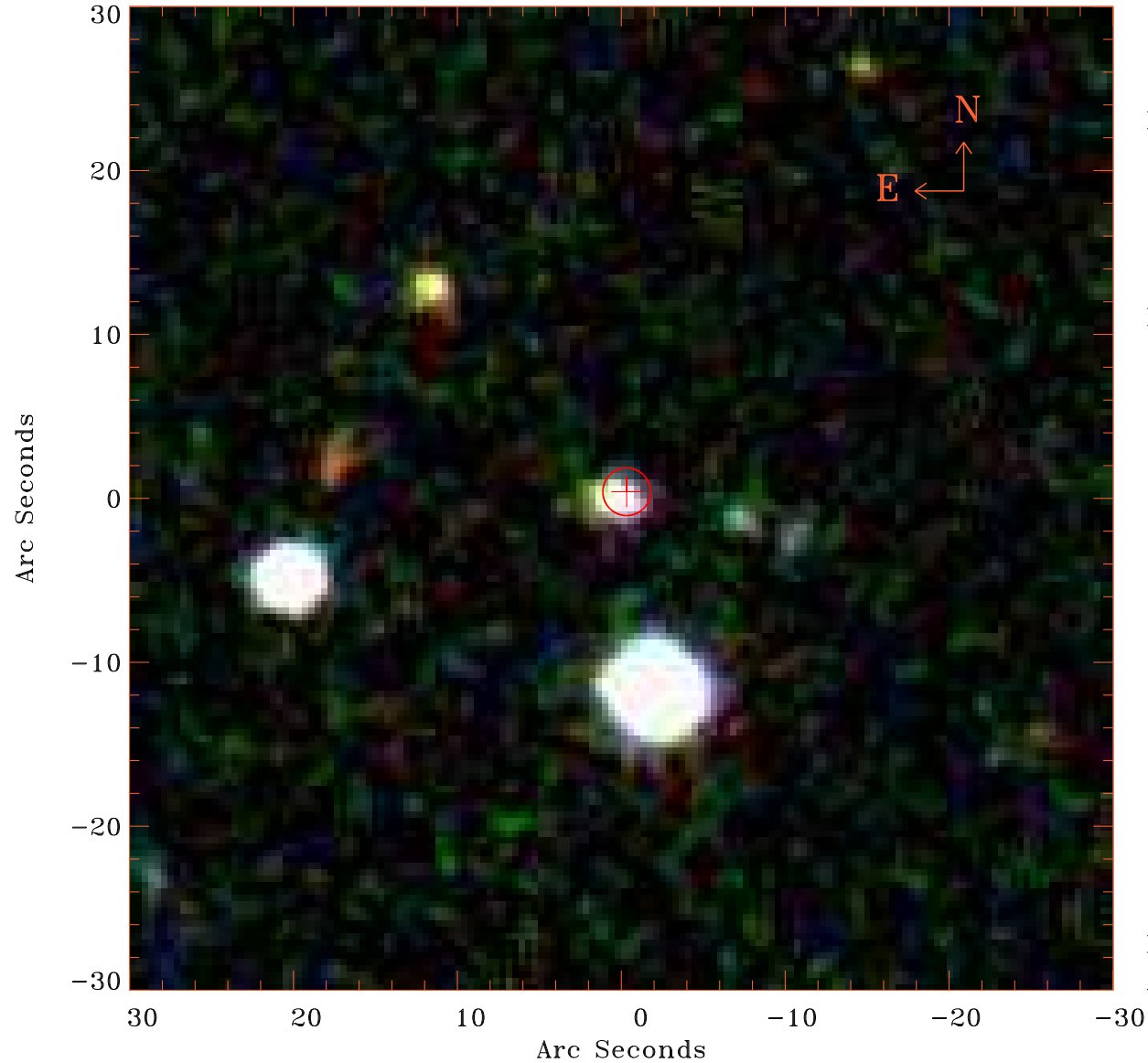


# EPIC source finding chart V10.0



Principal Investigator :

Ms Jeanette Gladstone

XMM target name :

NGC 4490

OBS ID : 556300101

Source number : 18

X-ray coordinates :

$\alpha$  : 12 31 19.71

$\delta$  : +41 30 21.5

Center coordinates :

$\alpha$  : 12 31 19.70

$\delta$  : +41 30 21.5

Plate reference :

Origin : SDSS

Color coding :

i band ●

r band ●

g band ●

Error circle :

$R_{90}$  (") : 1.4

XMM SSC

Apr 23 02:16:54 2019