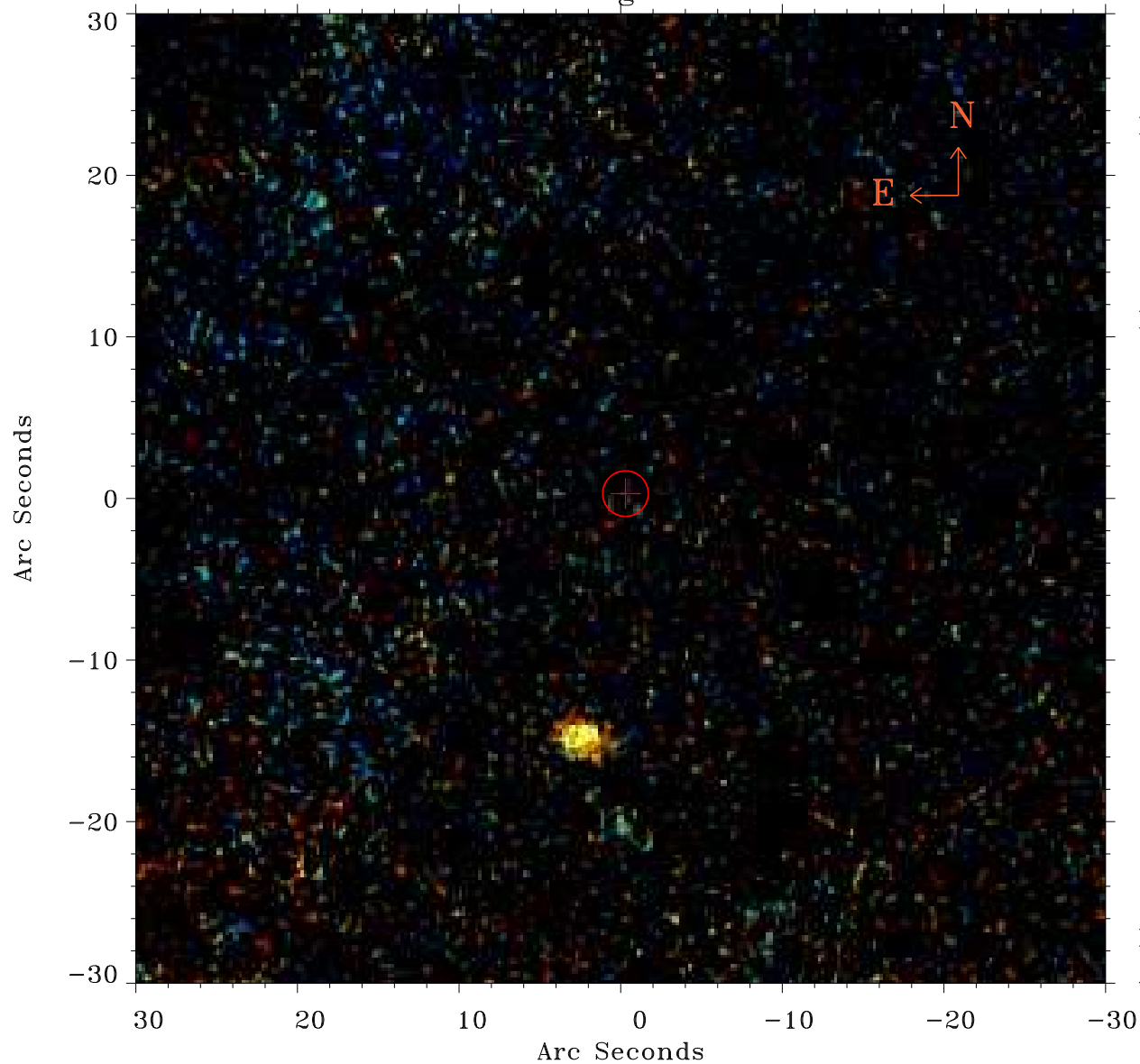


# EPIC source finding chart ACDS V10.0



Principal Investigator :

Ms Jeanette Gladstone

XMM target name :

NGC 4490

OBS ID : 556300101

Source number : 19

X-ray coordinates :

$\alpha$  : 12 30 23.41

$\delta$  : +41 36 52.7

Center coordinates :

$\alpha$  : 12 30 23.42

$\delta$  : +41 36 52.6

Plate reference :

Origin : PanSTARRS-DR1

Color coding :

z band ●

(z+g)/2 ●

g band ●

Error:

R90 : 1.4 arcsec

XMM SSC

Apr 23 02:20:13 2019