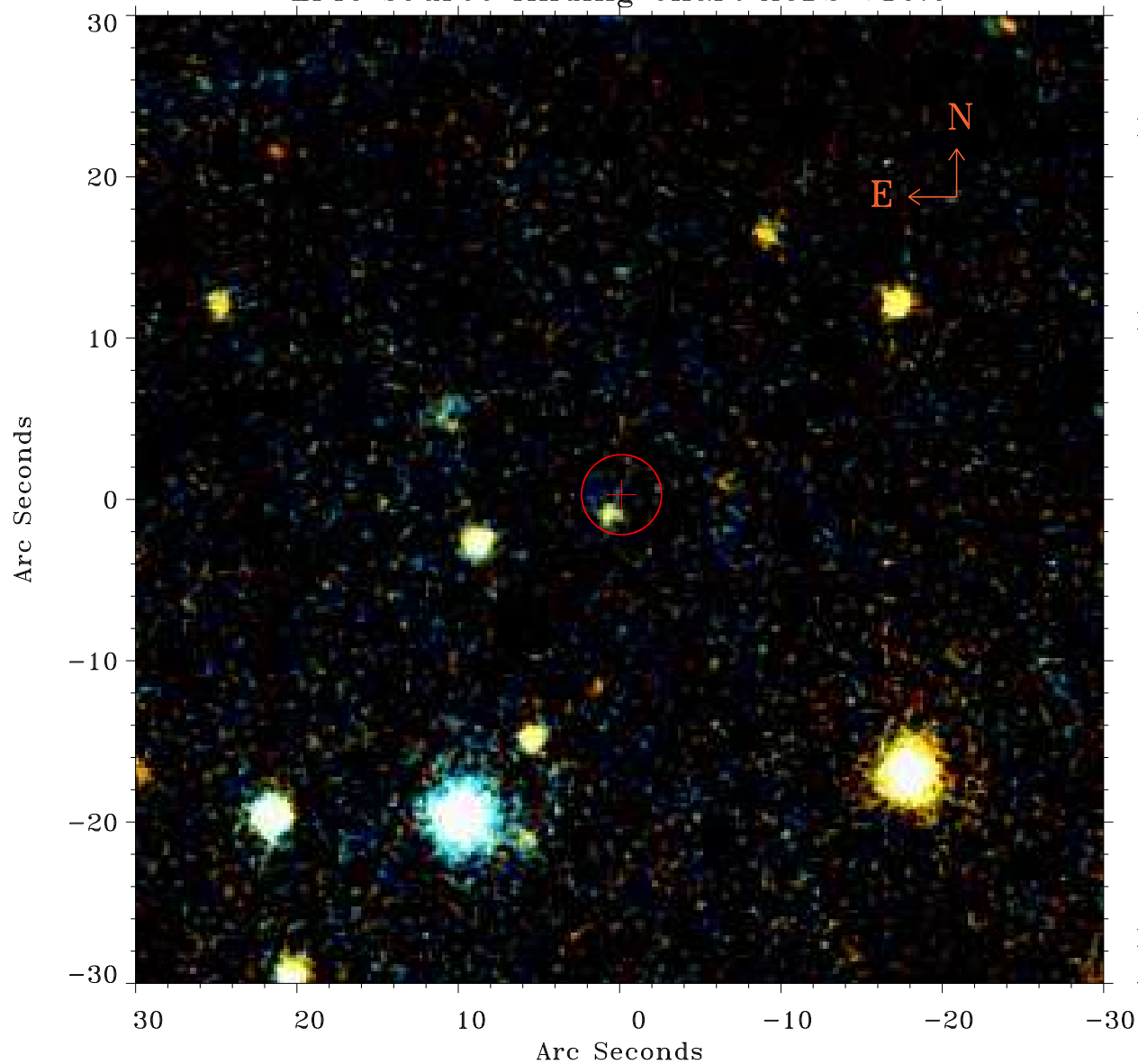


# EPIC source finding chart ACDS V10.0



Principal Investigator :

Dr Jelle Kaastra

XMM target name :

Mrk 509

OBS ID : 601390301

Source number : 41

X-ray coordinates :

$\alpha$  : 20 43 36.38

$\delta$  : -10 45 09.5

Center coordinates :

$\alpha$  : 20 43 36.37

$\delta$  : -10 45 09.5

Plate reference :

Origin : PanSTARRS-DR1

Color coding :

z band ●

(z+g)/2 ●

g band ●

Error:

R90 : 2.5 arsec

XMM SSC

Apr 19 15:41:38 2019