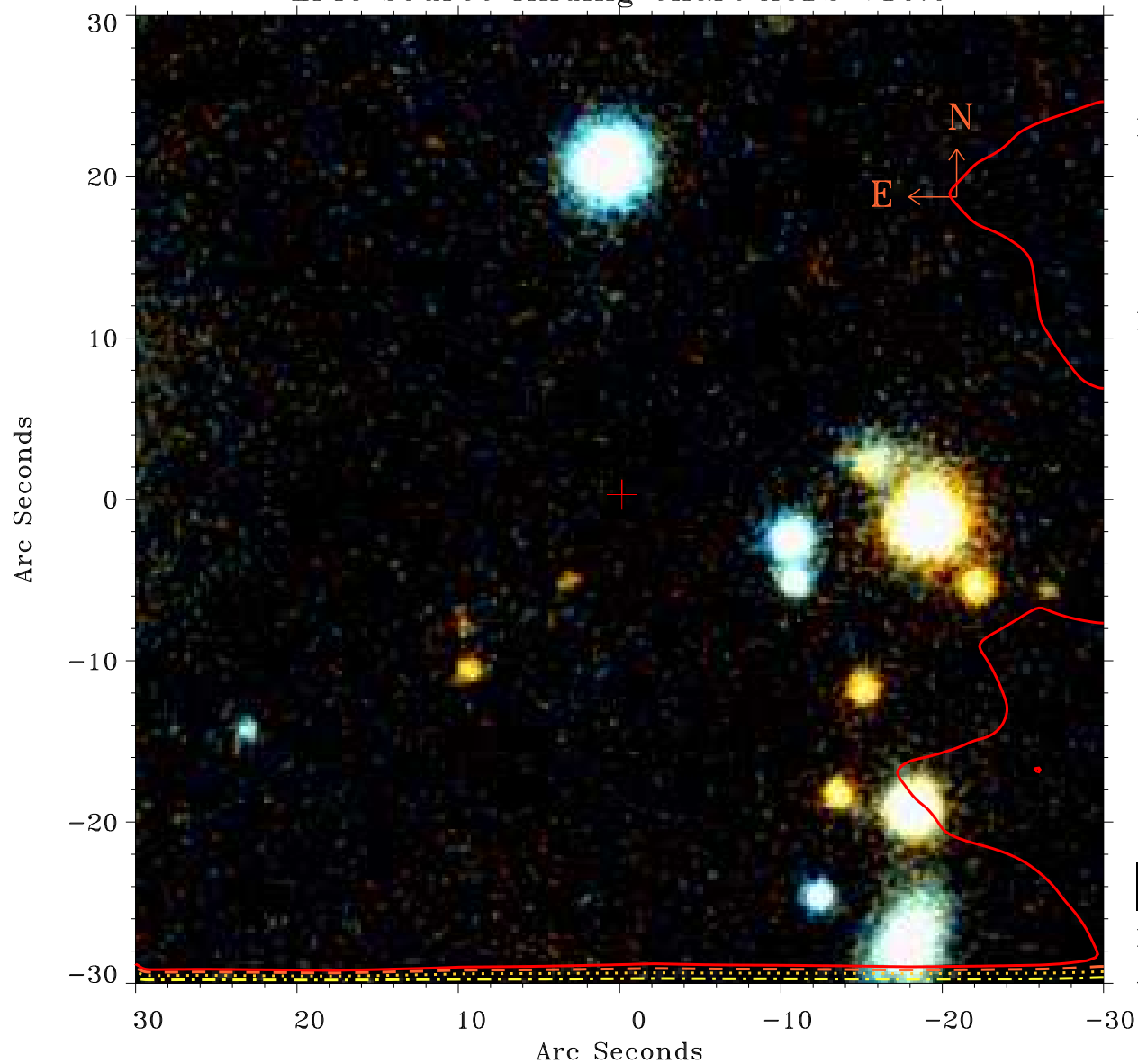


EPIC source finding chart ACDS V10.0



Principal Investigator :

Dr Jelle Kaastra

XMM target name :

Mrk 509

OBS ID : 601390601

Source number : 2

X-ray coordinates :

α : 20 44 06.47

δ : -10 43 31.4

Center coordinates :

α : 20 44 06.46

δ : -10 43 31.5

Plate reference :

Origin : PanSTARRS-DR1

Color coding :

z band ●

(z+g)/2 ●

g band ●

Contour levels (counts) :



XMM SSC

Apr 21 07:18:51 2019