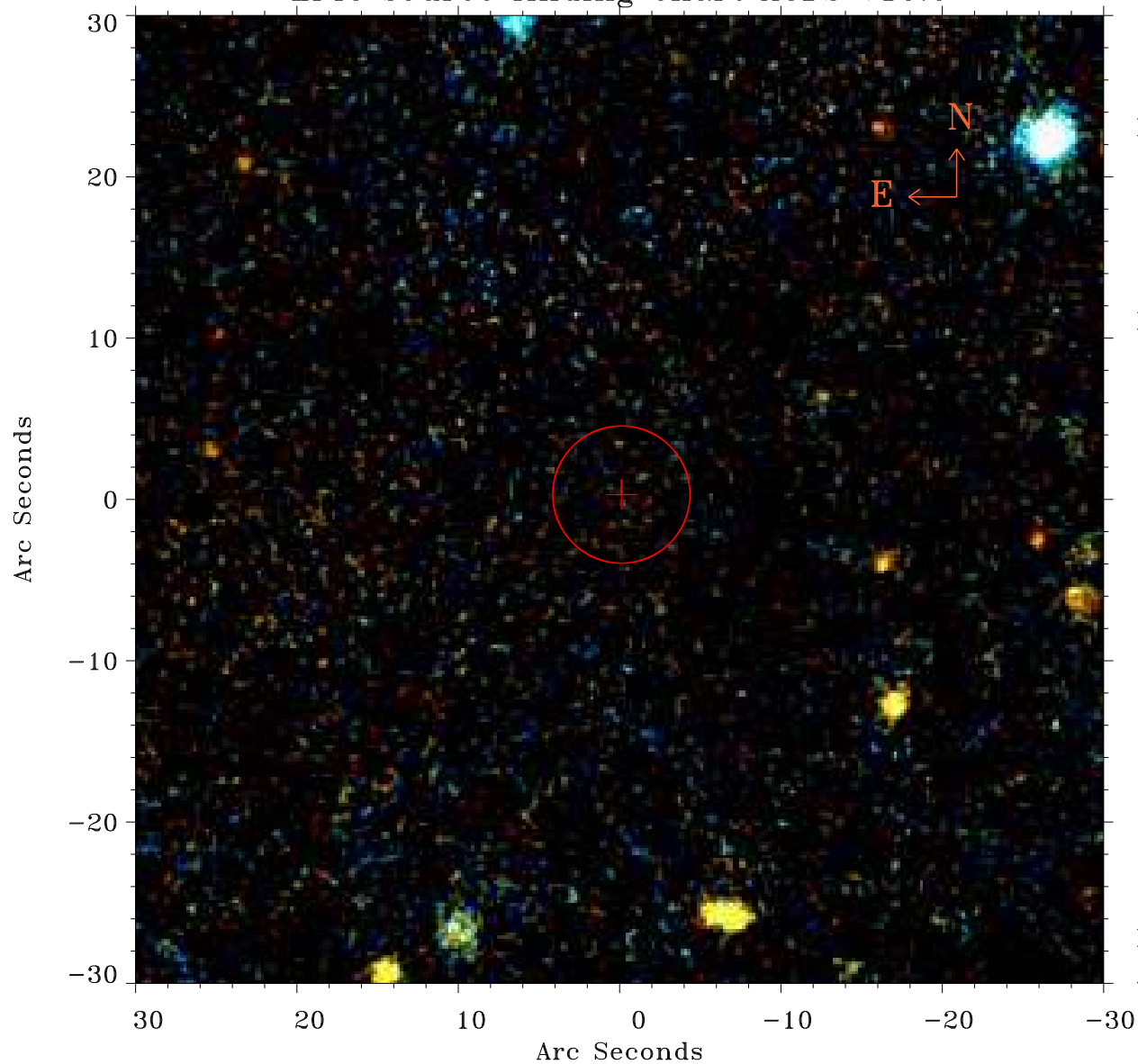


# EPIC source finding chart ACDS V10.0



Principal Investigator :

Dr Jelle Kaastra

XMM target name :

Mrk 509

OBS ID : 601390601

Source number : 60

X-ray coordinates :

$\alpha$  : 20 43 35.56

$\delta$  : -10 37 42.7

Center coordinates :

$\alpha$  : 20 43 35.55

$\delta$  : -10 37 42.8

Plate reference :

Origin : PanSTARRS-DR1

Color coding :

z band ●

(z+g)/2 ●

g band ●

Error:

R90 : 4.2 arsec

XMM SSC

Apr 21 07:16:38 2019