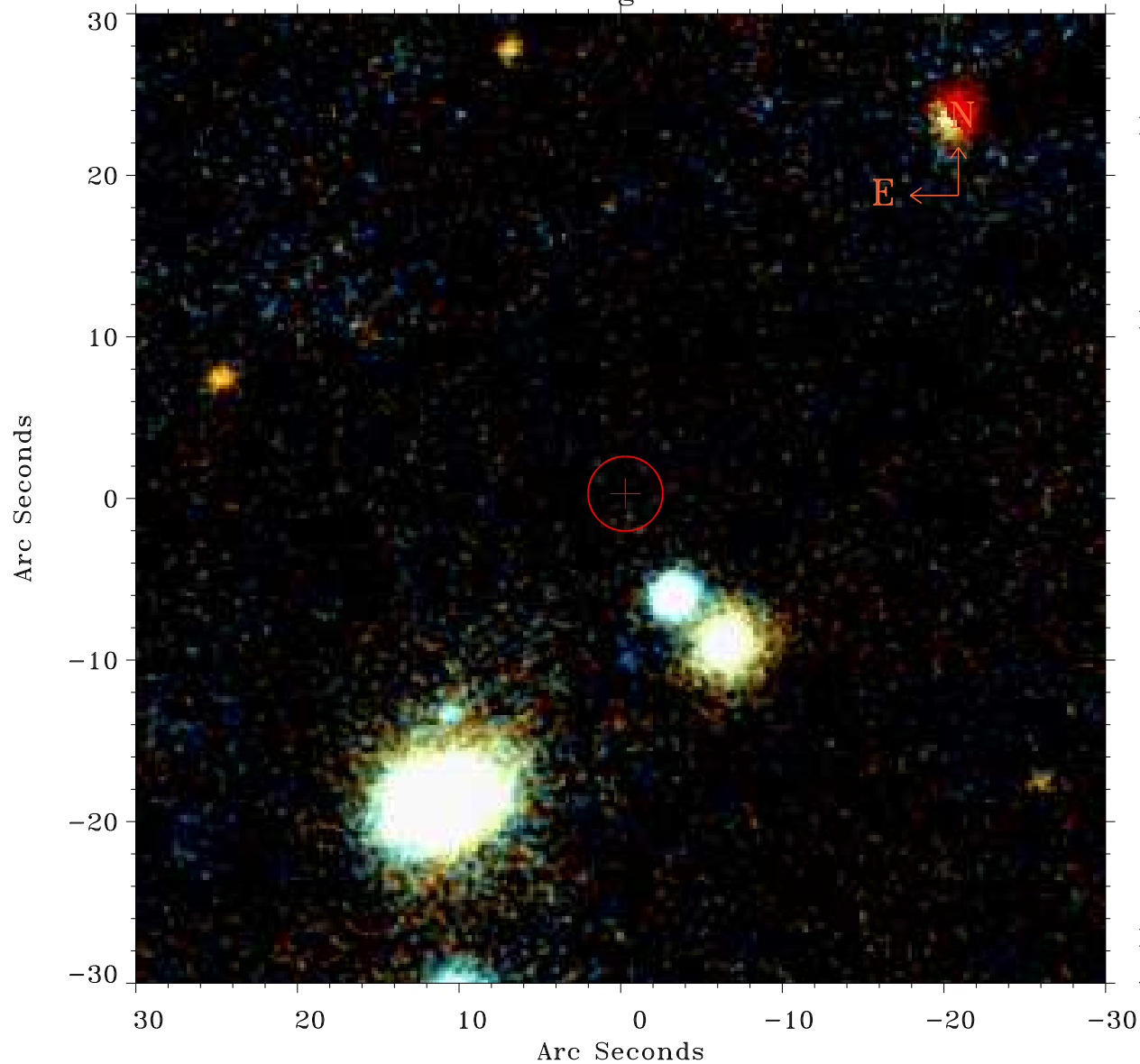


# EPIC source finding chart ACDS V10.0



Principal Investigator :

Dr Jelle Kaastra

XMM target name :

Mrk 509

OBS ID : 601391001

Source number : 28

X-ray coordinates :

$\alpha$  : 20 45 05.77

$\delta$  : -10 42 35.2

Center coordinates :

$\alpha$  : 20 45 05.78

$\delta$  : -10 42 35.3

Plate reference :

Origin : PanSTARRS-DR1

Color coding :

z band ●

(z+g)/2 ●

g band ●

Error:

R90 : 2.3 arsec

XMM SSC

Apr 26 23:29:45 2019