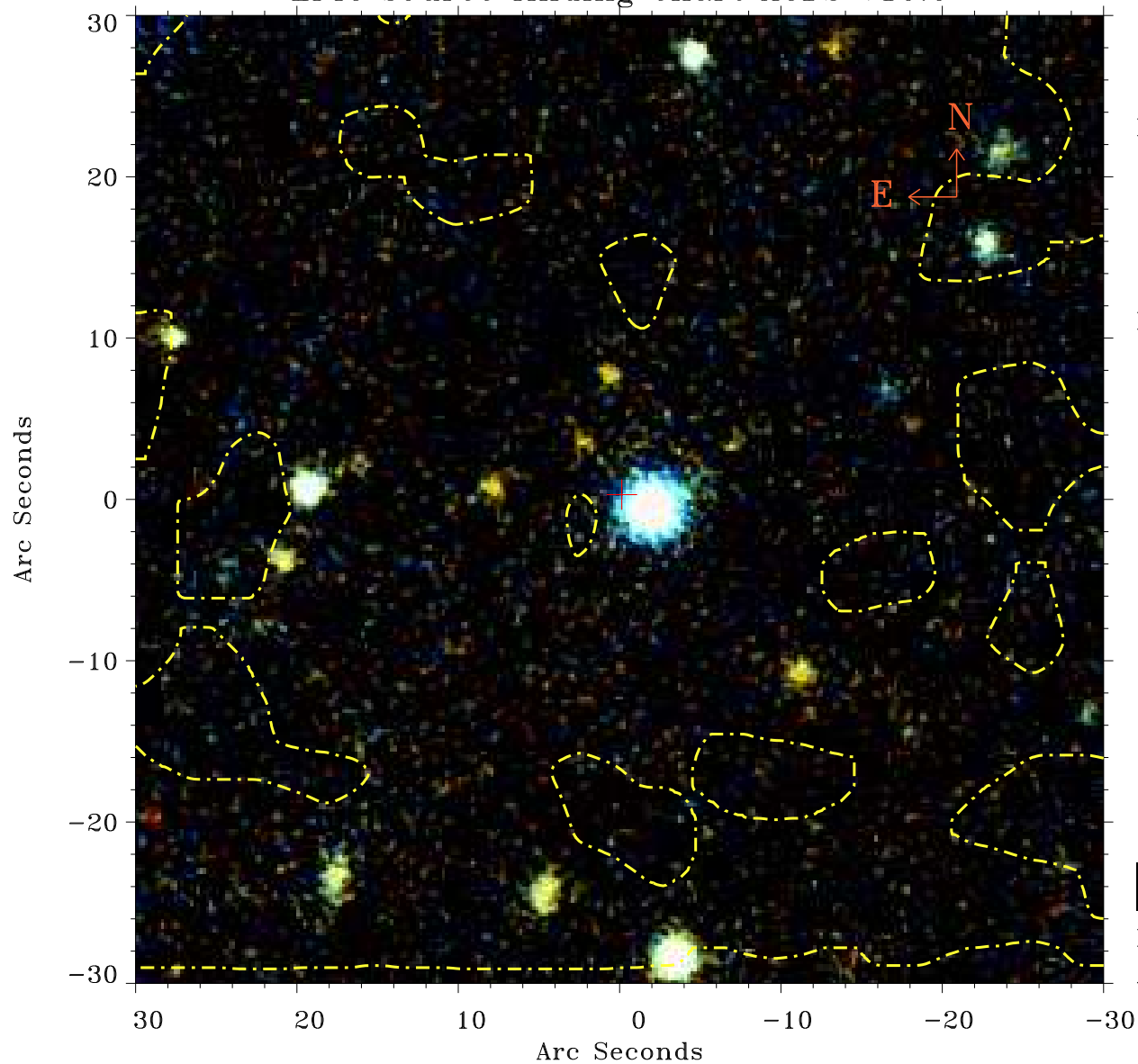


# EPIC source finding chart ACDS V10.0



Principal Investigator :

Dr Jelle Kaastra

XMM target name :

Mrk 509

OBS ID : 601391001

Source number : 40

X-ray coordinates :

$\alpha$  : 20 43 55.03

$\delta$  : -10 30 26.9

Center coordinates :

$\alpha$  : 20 43 55.03

$\delta$  : -10 30 27.0

Plate reference :

Origin : PanSTARRS-DR1

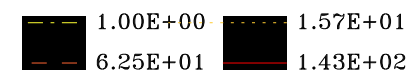
Color coding :

z band ●

(z+g)/2 ●

g band ●

Contour levels (counts) :



XMM SSC

Apr 26 23:18:09 2019