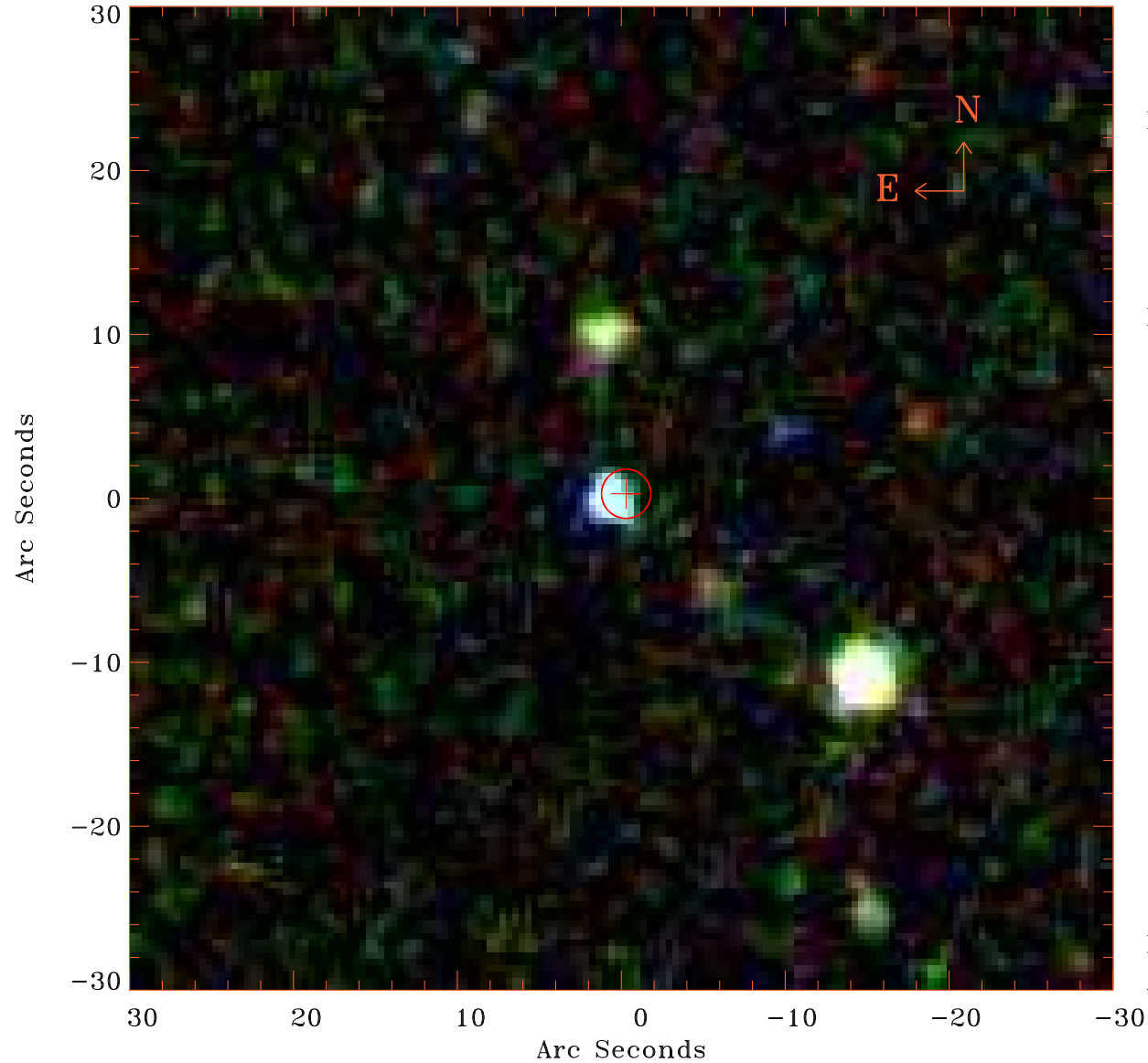


# EPIC source finding chart V10.0



Principal Investigator :

Prof William Brandt

XMM target name :

KUG 1208+386

OBS ID : 601780901

Source number : 8

X-ray coordinates :

$\alpha$  : 12 10 40.01

$\delta$  : +38 22 15.2

Center coordinates :

$\alpha$  : 12 10 40.00

$\delta$  : +38 22 15.3

Plate reference :

Origin : SDSS

Color coding :

i band ●

r band ●

g band ●

Error circle :

$R_{90}$  (") : 1.5

XMM SSC

Apr 18 19:30:55 2019