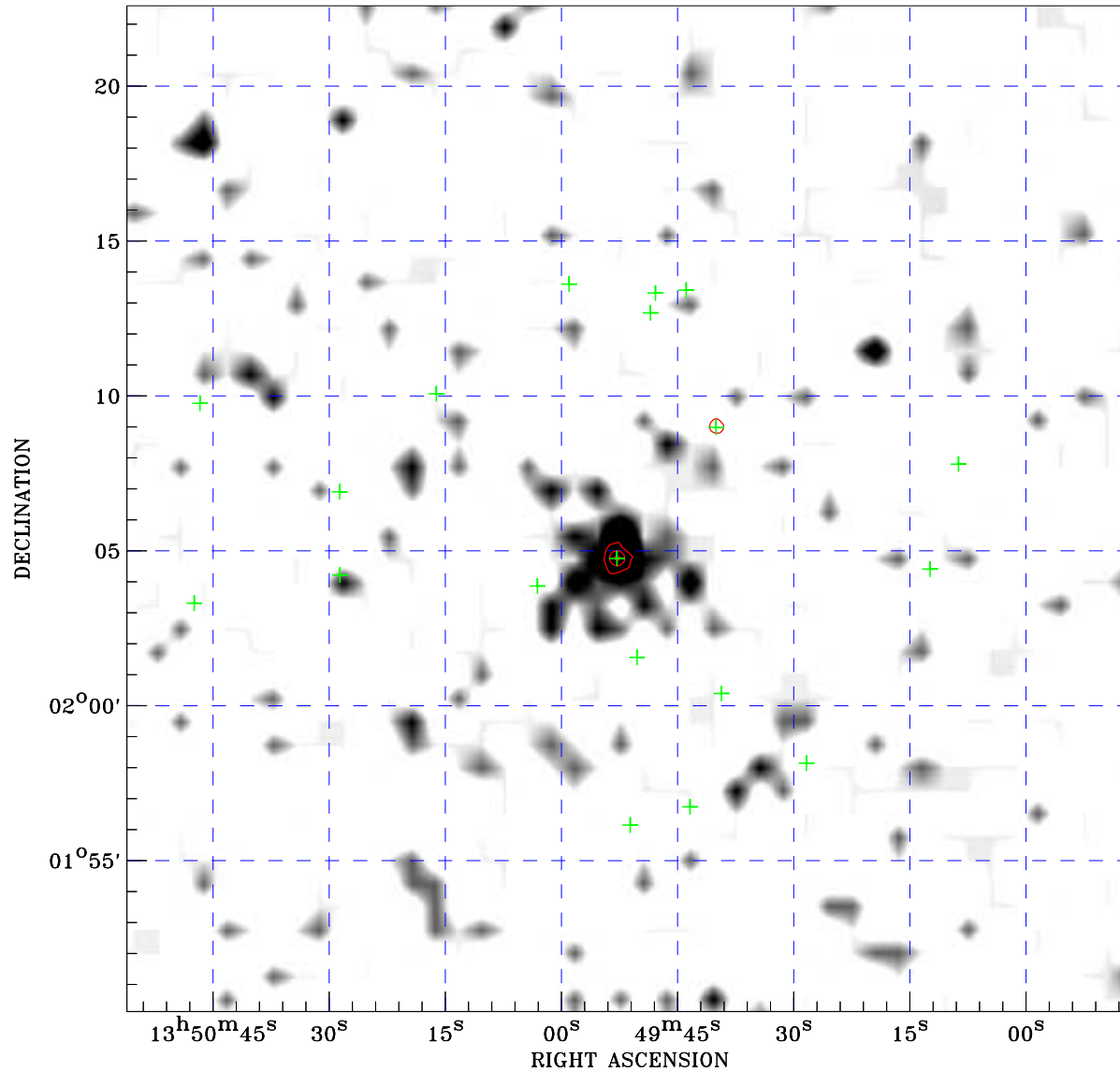



PDF XMM RASS image ACDS V10.0



RASS image gray scale (Log) :

 < 2.400E-03 > 7.378E-03
 (counts s⁻¹)

⊙ Epic image contour
 levels at 2, 7 and 30 σ

+ Detected Epic sources

Principal Investigator :
 Prof William Brandt

XMM target name :
 UM 614

Observation ID :
 0601781301

Epic image :
 α : 13 49 51.16
 δ : +02 06 21.7
 Energy band : 0.2–12.0 keV
 MOS1 : 8499 s
 MOS2 : 8603 s
 PN : 6823 s

Contour levels (counts) :
 2 σ :2.039E+01 7 σ :4.678E+01
 30 σ :1.682E+02

RASS image :
 Observation : 931737p
 Instrument : PSPCC
 α : 13 41 51.05
 δ : -00 09 00.7

XMM SSC
 May 1 18:45:33 2019