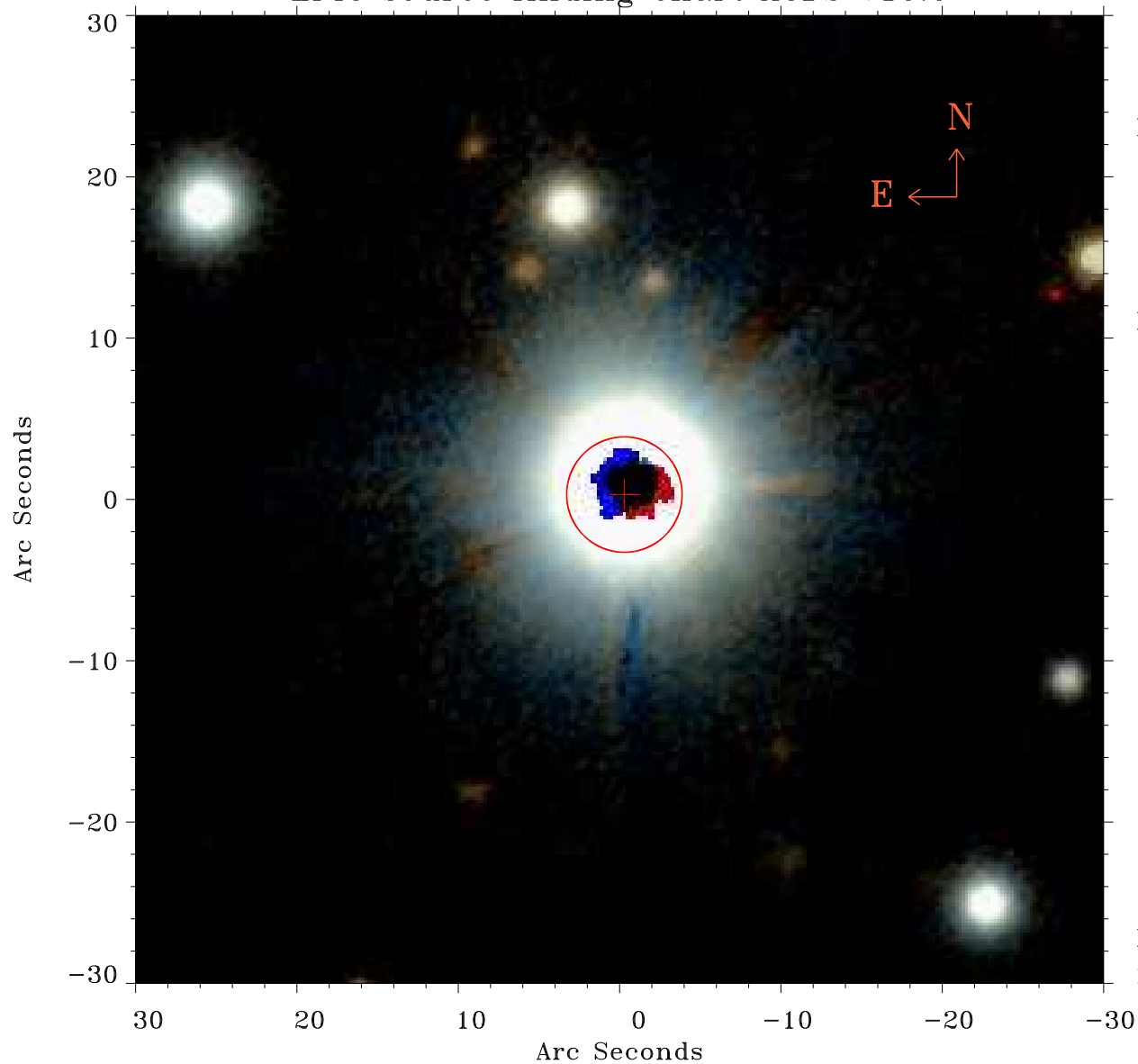


# EPIC source finding chart ACDS V10.0



Principal Investigator :

Prof Frederick Walter

XMM target name :

G 171-58

OBS ID : 602830501

Source number : 28

X-ray coordinates :

$\alpha$  : 00 24 26.16

$\delta$  : +47 57 18.7

Center coordinates :

$\alpha$  : 00 24 26.17

$\delta$  : +47 57 18.6

Plate reference :

Origin : PanSTARRS-DR1

Color coding :

z band ●

(z+g)/2 ●

g band ●

Error:

R90 : 3.6 arcsec

XMM SSC

May 2 12:20:53 2019