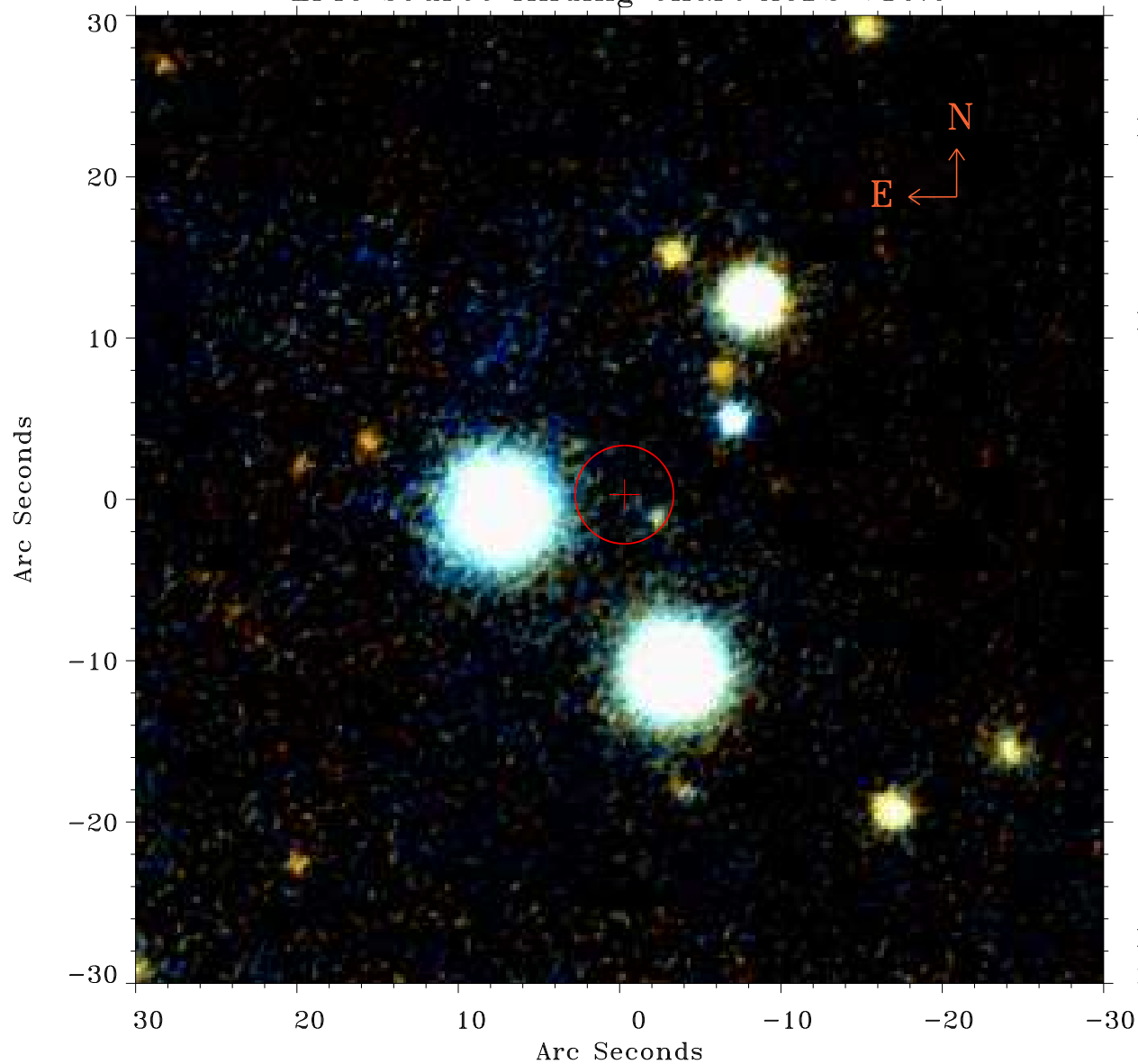


# EPIC source finding chart ACDS V10.0



Principal Investigator :  
Prof Frederick Walter

XMM target name :  
G 171-58

OBS ID : 602830501  
Source number : 38

X-ray coordinates :  
 $\alpha$  : 00 25 36.19  
 $\delta$  : +47 59 42.9

Center coordinates :  
 $\alpha$  : 00 25 36.20  
 $\delta$  : +47 59 42.8

Plate reference :  
Origin : PanSTARRS-DR1

Color coding :  
z band ●  
(z+g)/2 ●  
g band ●

Error:  
R90 : 3.0 arsec

XMM SSC  
May 2 12:22:59 2019