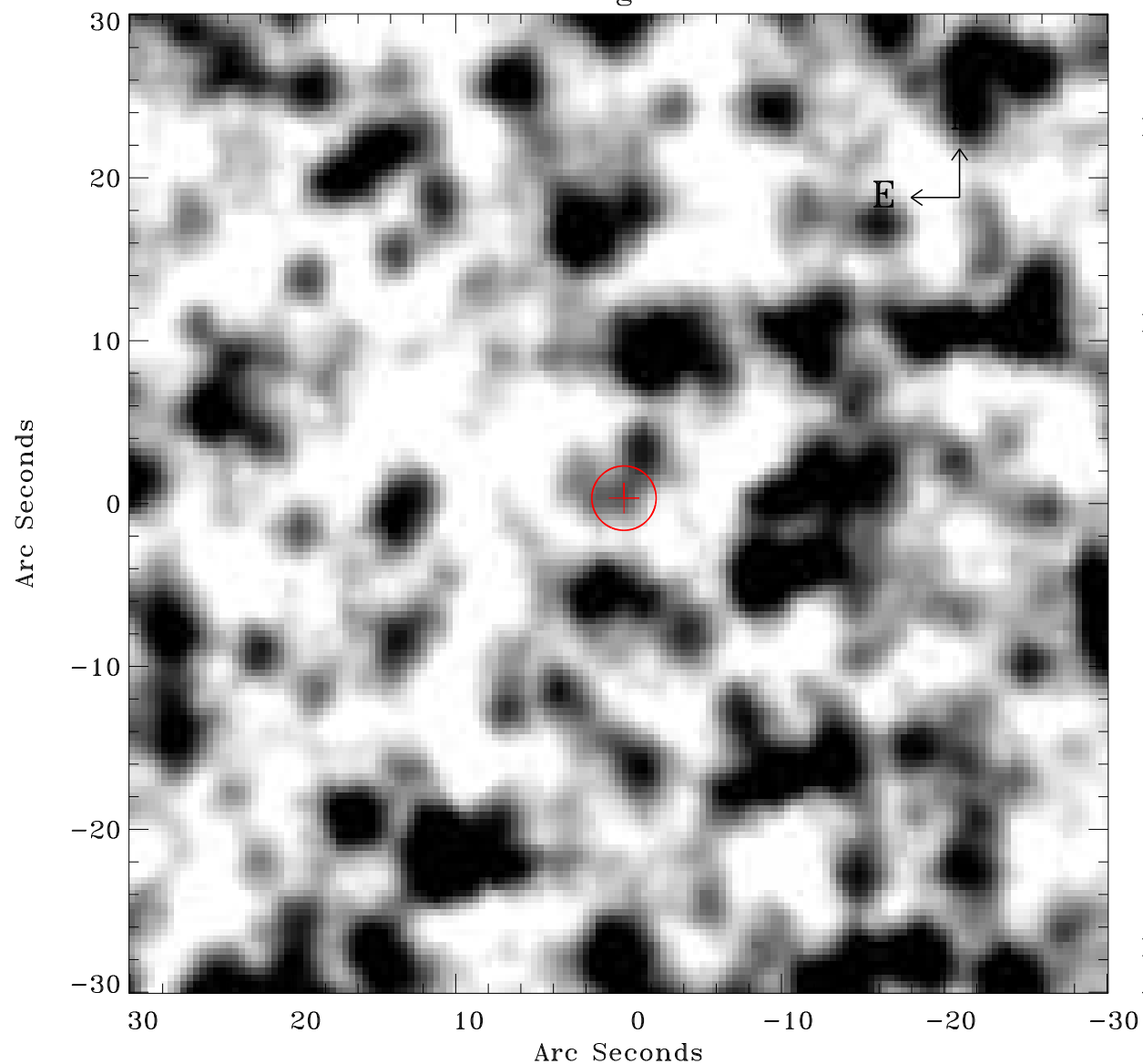


EPIC source finding chart ACDS V10.0



Principal Investigator :
Dr Raimundo Lopes de Oliveira

XMM target name :
NGC 1901

OBS ID : 602980201
Source number : 16

X-ray coordinates :
 α : 05 18 21.42
 δ : -68 35 48.2

Center coordinates :
 α : 05 18 21.41
 δ : -68 35 48.1

Plate reference :
Origin : CDS HIPs Network
Plate : MAMA srcj
Pixel : 0.40 "/pix

Error circle :
 R_{90} (") : 2.0

XMM SSC
Apr 27 10:39:54 2019