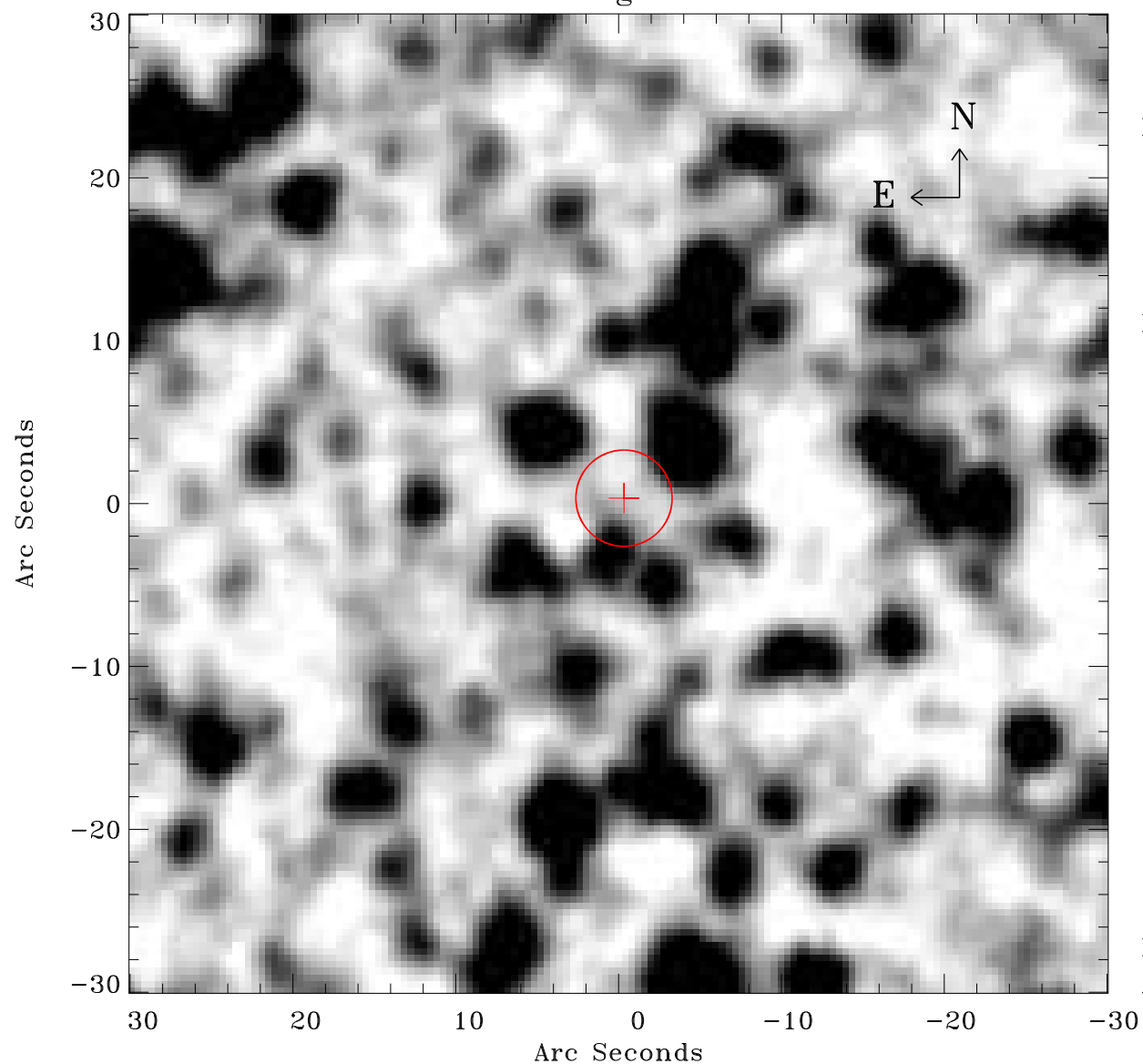


# EPIC source finding chart ACDS V10.0



Principal Investigator :  
Dr Raimundo Lopes de Oliveira

XMM target name :  
NGC 1901

OBS ID : 602980201  
Source number : 27

X-ray coordinates :  
 $\alpha$  : 05 16 59.06  
 $\delta$  : -68 28 33.5

Center coordinates :  
 $\alpha$  : 05 16 59.05  
 $\delta$  : -68 28 33.4

Plate reference :  
Origin : CDS HIPs Network  
Plate : MAMA srcj  
Pixel : 0.40 "/pix

Error circle :  
 $R_{90}$  (") : 2.9

XMM SSC  
Apr 27 10:37:08 2019