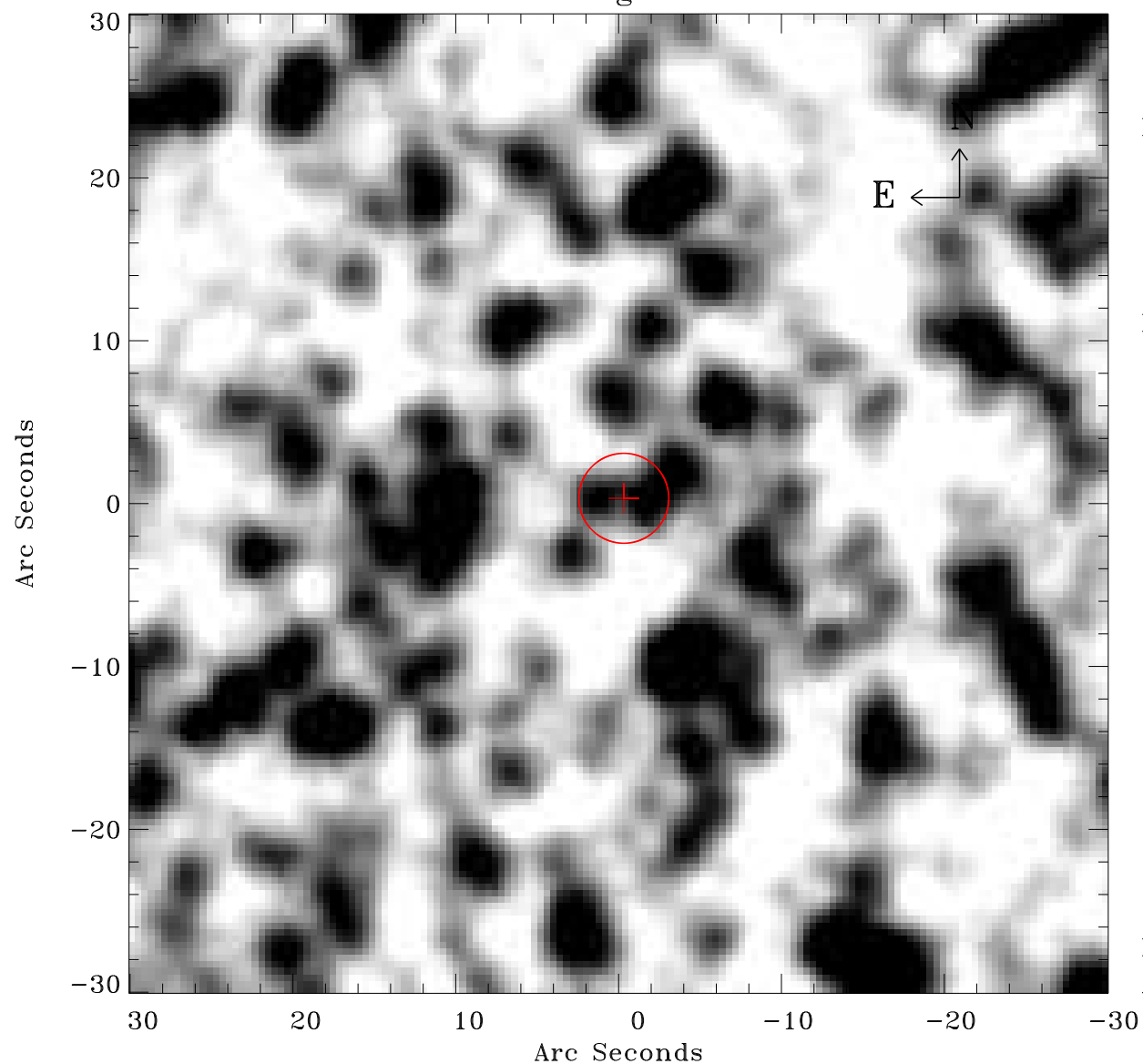


# EPIC source finding chart ACDS V10.0



Principal Investigator :

Dr Raimundo Lopes de Oliveira

XMM target name :

NGC 1901

OBS ID : 602980201

Source number : 28

X-ray coordinates :

$\alpha$  : 05 15 51.39

$\delta$  : -68 31 21.0

Center coordinates :

$\alpha$  : 05 15 51.38

$\delta$  : -68 31 20.9

Plate reference :

Origin : CDS HIPs Network

Plate : MAMA srcj

Pixel : 0.40 "/pix

Error circle :

$R_{90}$  (") : 2.7

XMM SSC

Apr 27 10:31:07 2019