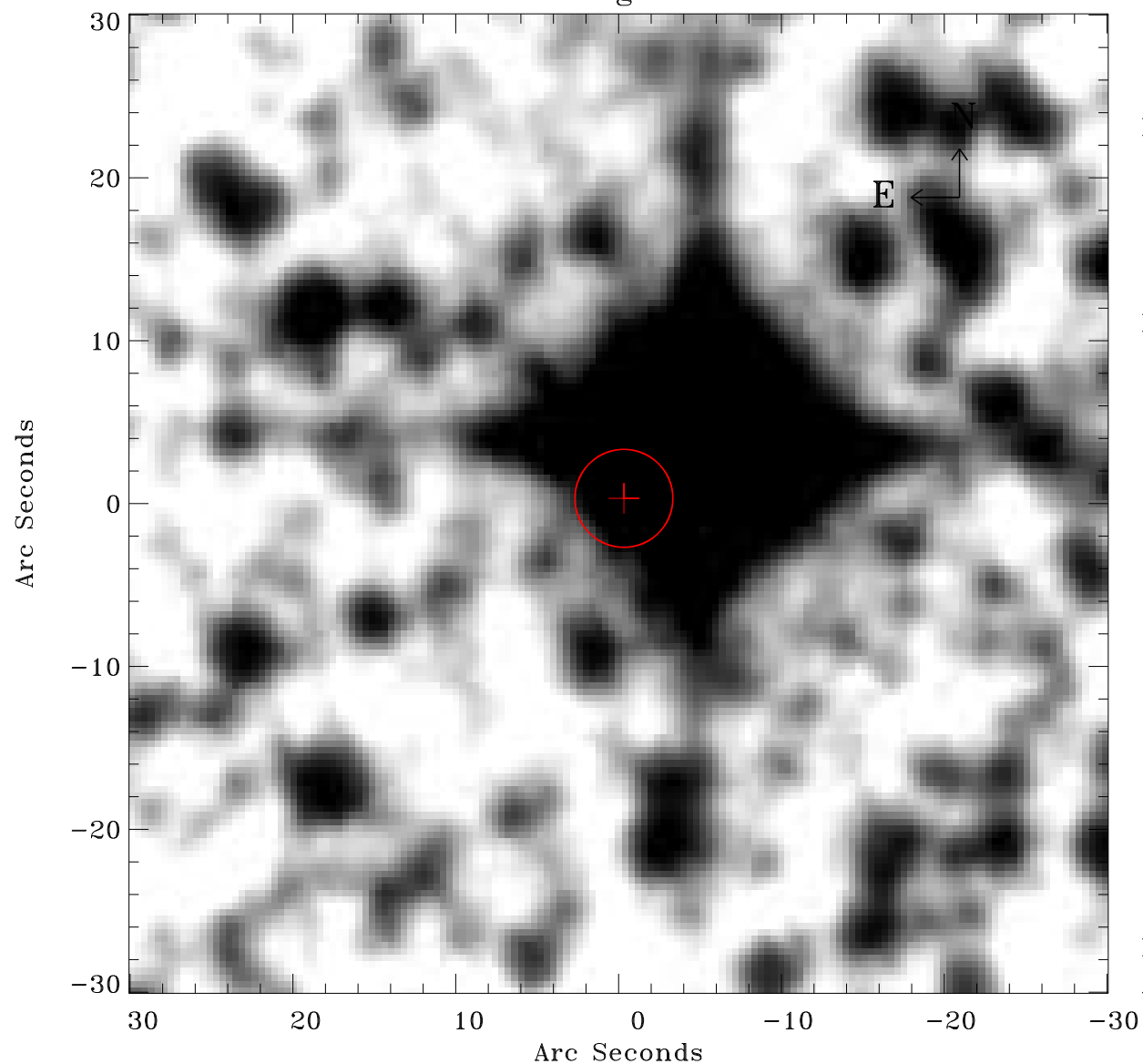


EPIC source finding chart ACDS V10.0



Principal Investigator :
Dr Raimundo Lopes de Oliveira

XMM target name :
NGC 1901

OBS ID : 602980201
Source number : 38

X-ray coordinates :
 α : 05 19 11.59
 δ : -68 34 55.8

Center coordinates :
 α : 05 19 11.57
 δ : -68 34 55.7

Plate reference :
Origin : CDS HIPs Network
Plate : MAMA srcj
Pixel : 0.40 "/pix

Error circle :
 R_{90} (") : 3.0

XMM SSC
Apr 27 10:42:26 2019