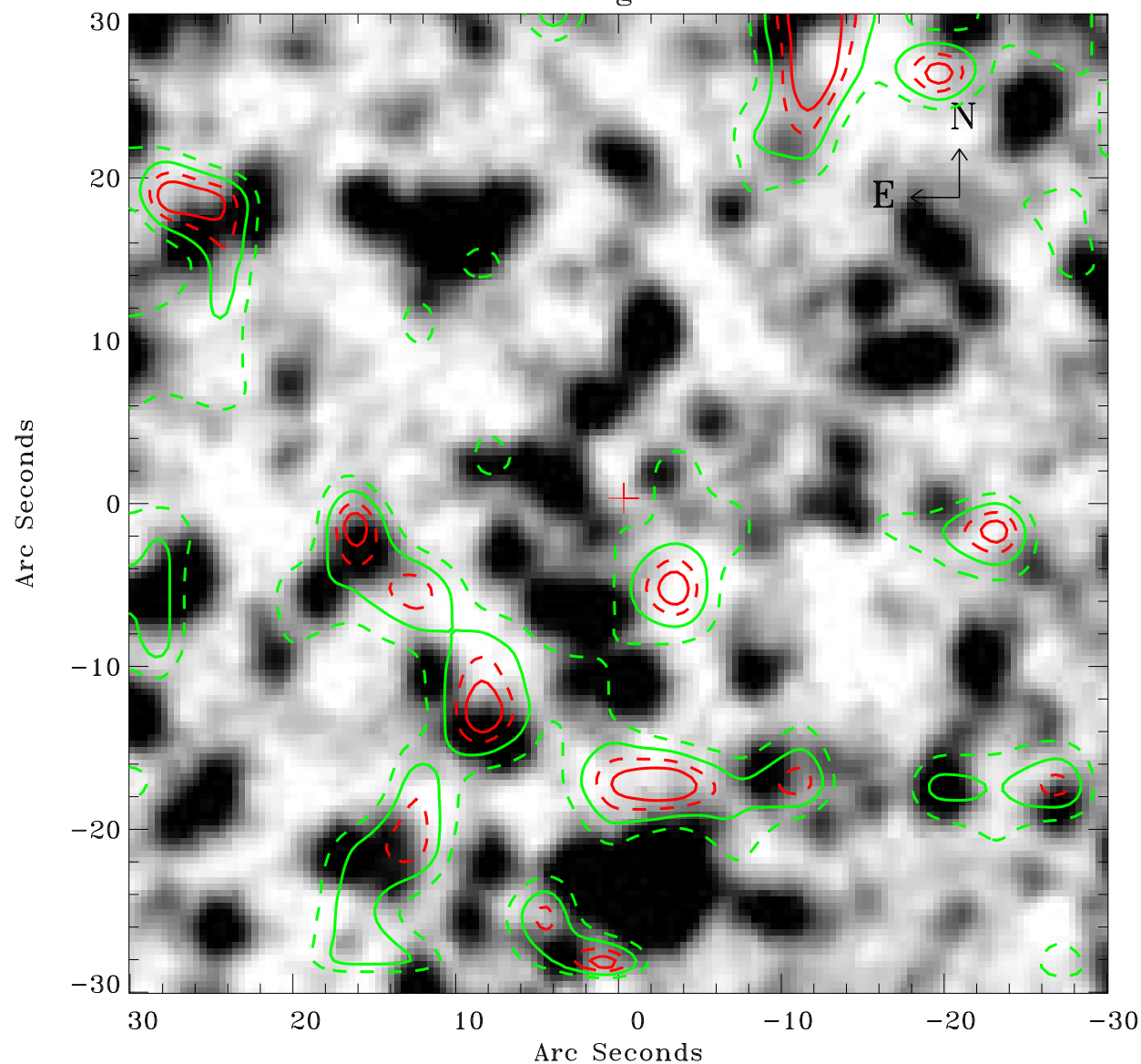


EPIC source finding chart ACDS V10.0



Principal Investigator :
Dr Raimundo Lopes de Oliveira

XMM target name :
NGC 1901

OBS ID : 602980201
Source number : 46

X-ray coordinates :
 α : 05 20 21.08
 δ : -68 23 59.6

Center coordinates :
 α : 05 20 21.07
 δ : -68 23 59.5

Plate reference :
Origin : CDS HIPs Network
Plate : MAMA srcj
Pixel : 0.40 "/pix

Contour levels (counts) :
--- 3.50E+00 --- 4.49E+00
--- 5.31E+00 --- 5.96E+00

XMM SSC
Apr 27 10:43:39 2019