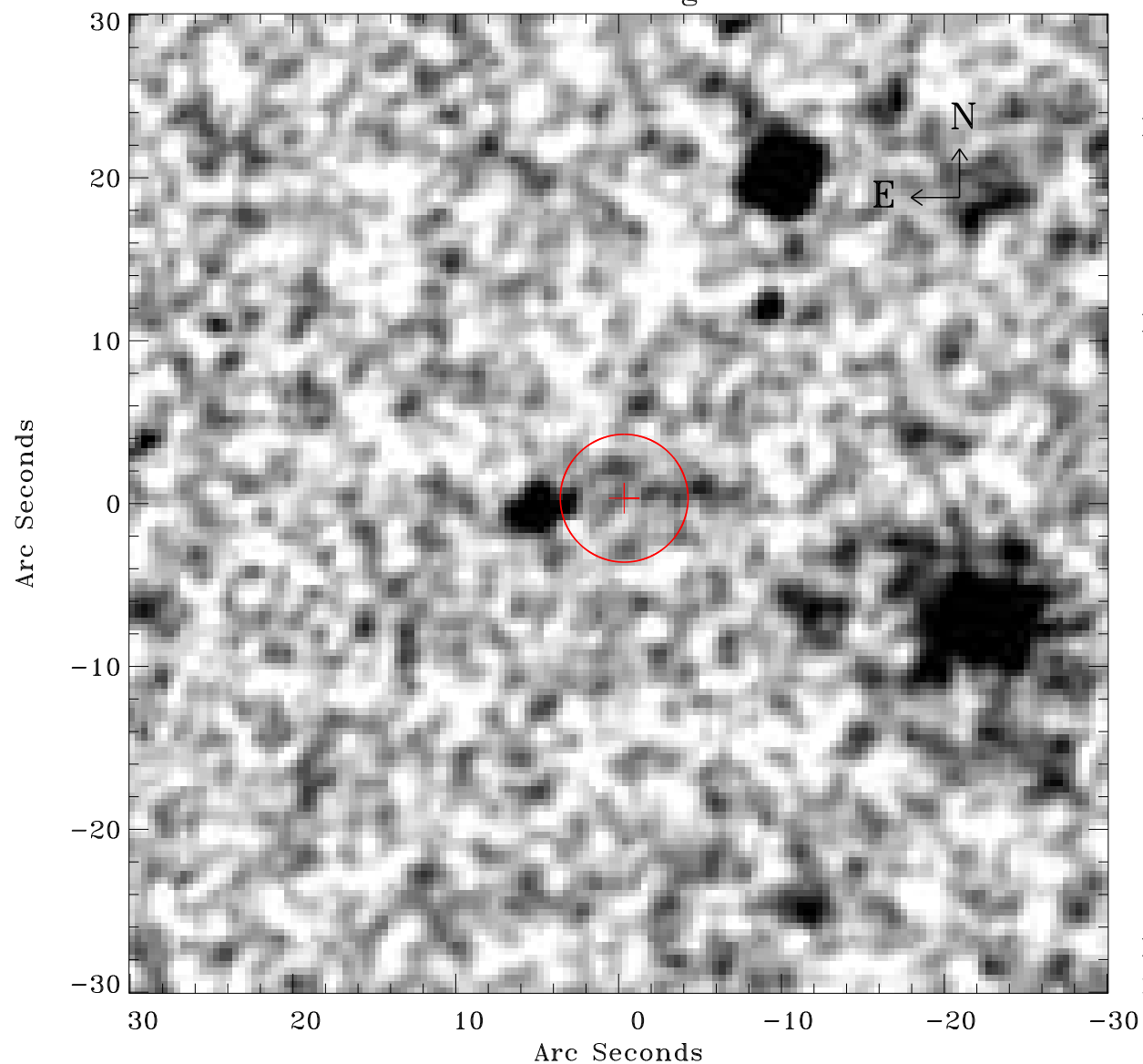


# EPIC source finding chart V10



Principal Investigator :

Prof Hans Boehringer

XMM target name :

SZE\_B15

OBS ID : 604873434

Source number : 30

X-ray coordinates :

$\alpha$  : 23 25 05.75

$\delta$  : -53 47 21.8

Center coordinates :

$\alpha$  : 23 25 05.74

$\delta$  : -53 47 21.7

Plate reference :

Origin : CDS HIPs Network

Plate : MAMA srcj

Pixel : 0.40 "/pix

Error circle :

$R_{90}$  (") : 3.9

XMM SSC

May 9 21:35:09 2019