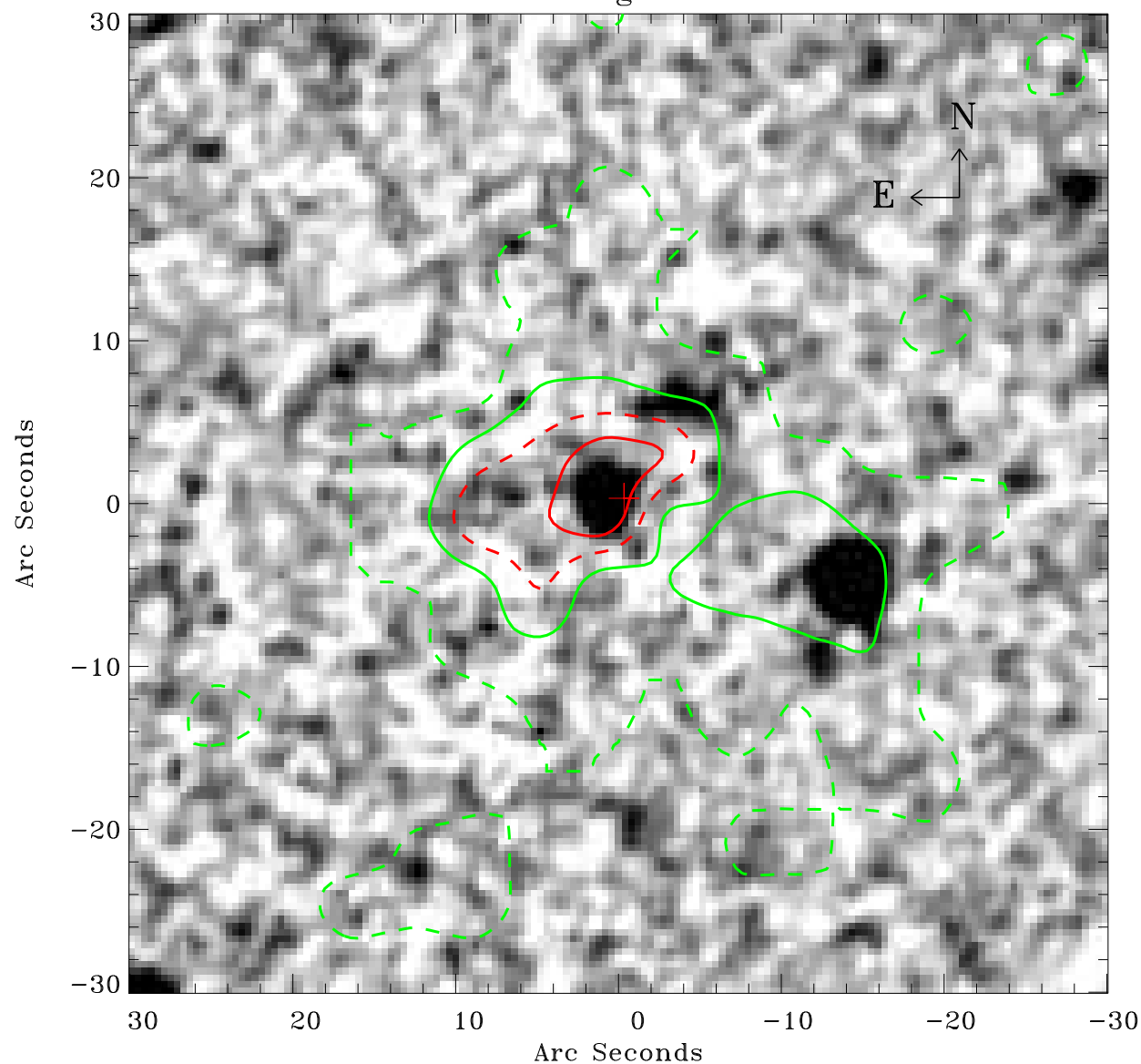


EPIC source finding chart ACDS V10.0



Principal Investigator :

Prof Hans Boehringer

XMM target name :

SZE_B15

OBS ID : 604873445

Source number : 1

X-ray coordinates :

α : 23 26 41.40

δ : -53 08 55.5

Center coordinates :

α : 23 26 41.39

δ : -53 08 55.4

Plate reference :

Origin : CDS HIPs Network

Plate : MAMA srcj

Pixel : 0.40 "/pix

Contour levels (counts) :

1.00E+00 3.12E+00

5.52E+00 7.77E+00

XMM SSC

Apr 29 22:55:14 2019