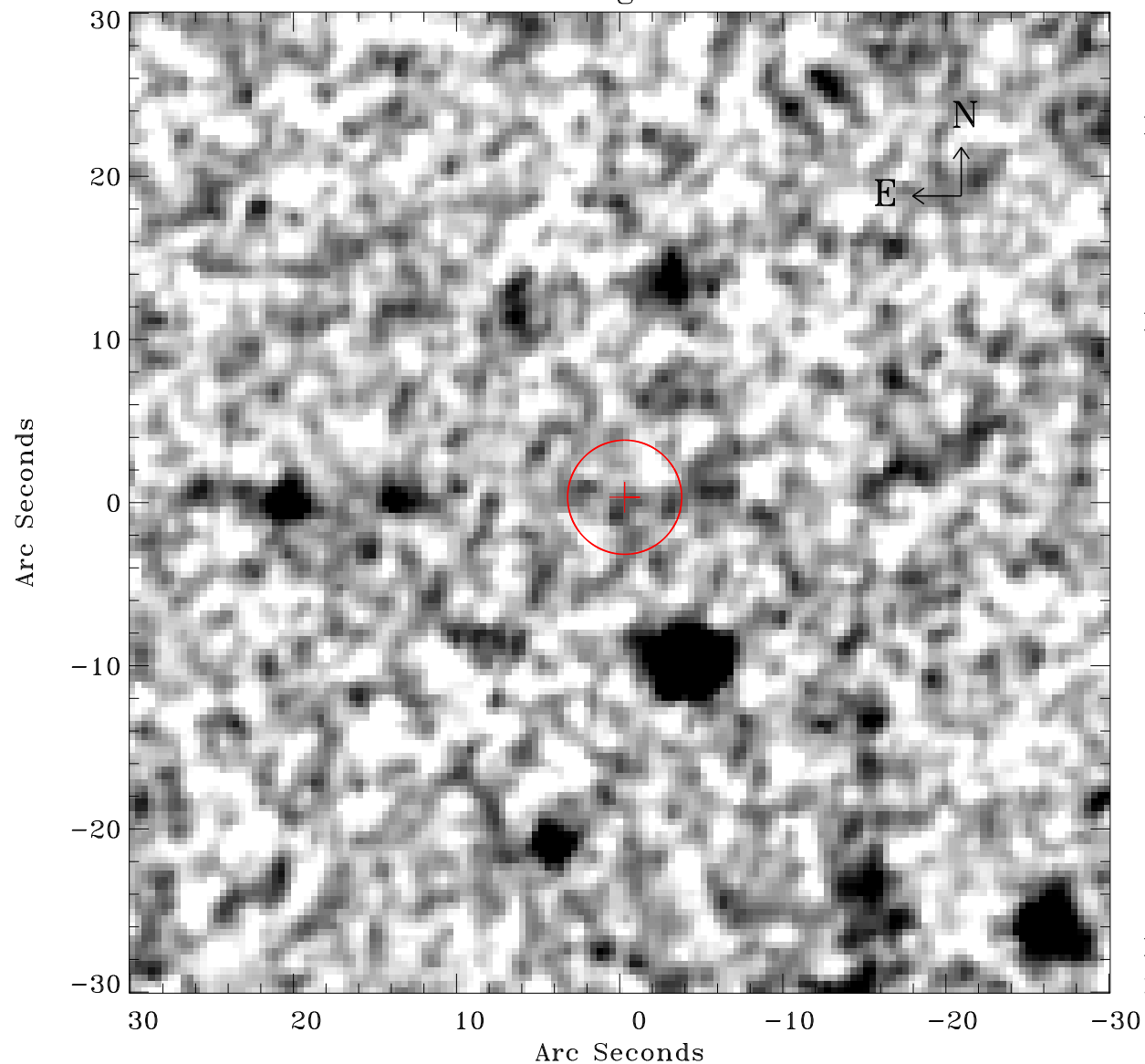


# EPIC source finding chart ACDS V10.0



Principal Investigator :

Prof Hans Boehringer

XMM target name :

SZE\_B15

OBS ID : 604873448

Source number : 35

X-ray coordinates :

$\alpha$  : 23 24 12.26

$\delta$  : -52 48 04.6

Center coordinates :

$\alpha$  : 23 24 12.25

$\delta$  : -52 48 04.5

Plate reference :

Origin : CDS HIPs Network

Plate : MAMA srcj

Pixel : 0.40 "/pix

Error circle :

$R_{90}$  (") : 3.5

XMM SSC

May 4 00:36:25 2019