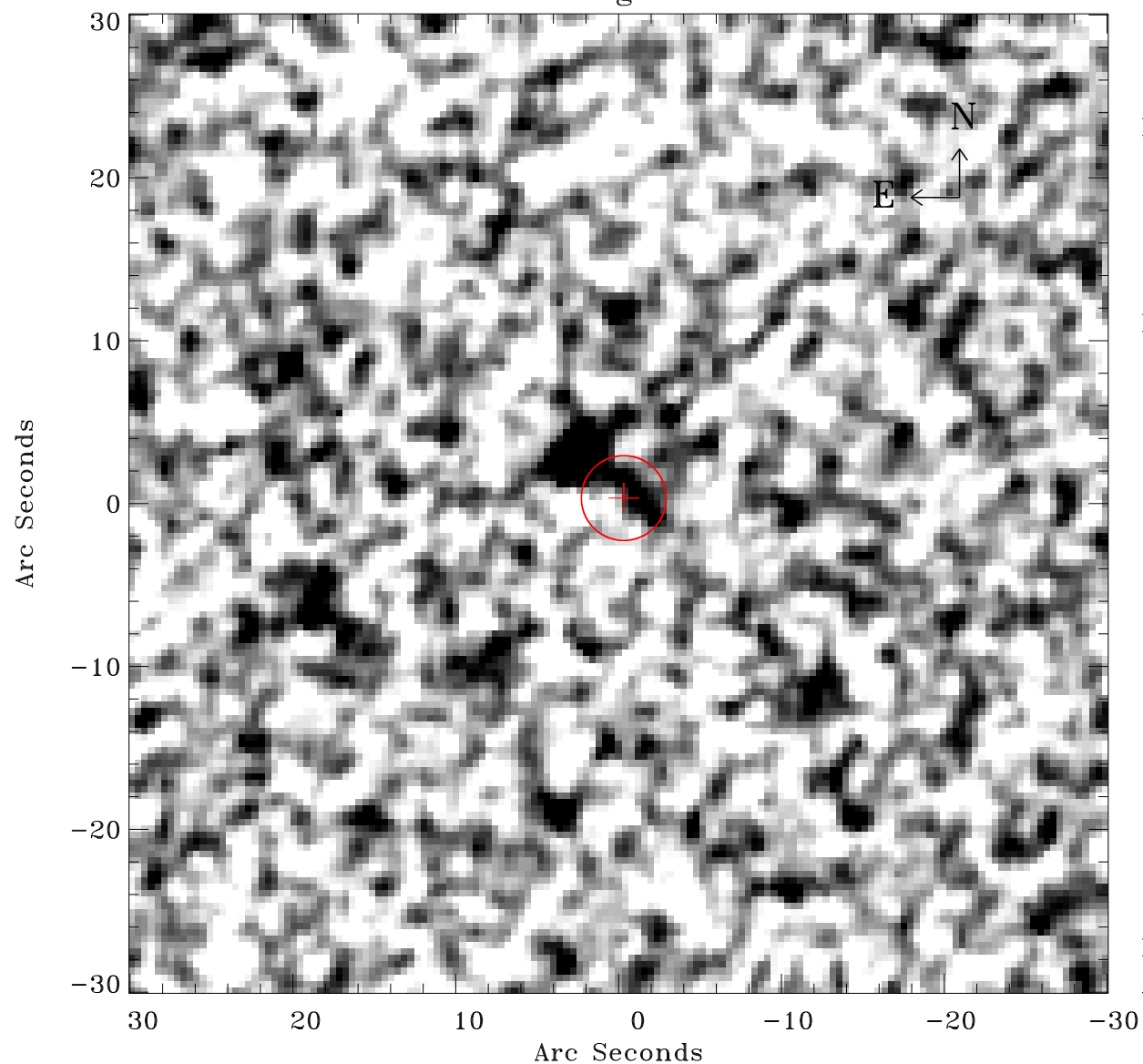


# EPIC source finding chart ACDS V10.0



Principal Investigator :

Prof Hans Boehringer

XMM target name :

SZE\_C01

OBS ID : 604873933

Source number : 4

X-ray coordinates :

$\alpha$  : 23 16 12.11

$\delta$  : -53 52 27.5

Center coordinates :

$\alpha$  : 23 16 12.11

$\delta$  : -53 52 27.4

Plate reference :

Origin : CDS HIPs Network

Plate : MAMA srcj

Pixel : 0.40 "/pix

Error circle :

$R_{90}$  (") : 2.6

XMM SSC

Apr 26 08:36:10 2019