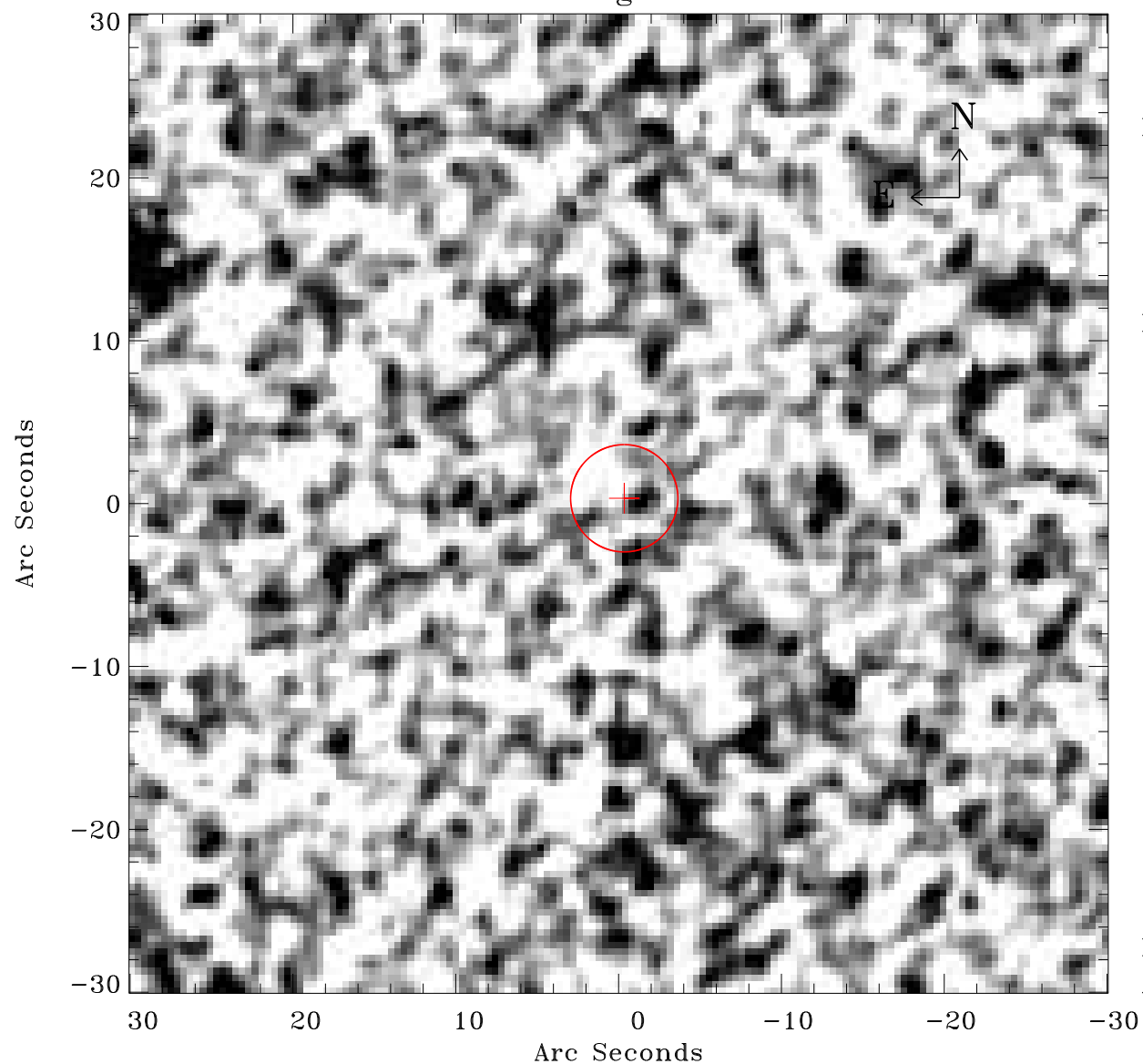


# EPIC source finding chart ACDS V10.0



Principal Investigator :

Prof Hans Boehringer

XMM target name :

SZE\_C01

OBS ID : 604873933

Source number : 15

X-ray coordinates :

$\alpha$  : 23 16 18.45

$\delta$  : -53 43 54.6

Center coordinates :

$\alpha$  : 23 16 18.44

$\delta$  : -53 43 54.6

Plate reference :

Origin : CDS HIPs Network

Plate : MAMA srcj

Pixel : 0.40 "/pix

Error circle :

$R_{90}$  (") : 3.3

XMM SSC

Apr 26 08:36:16 2019