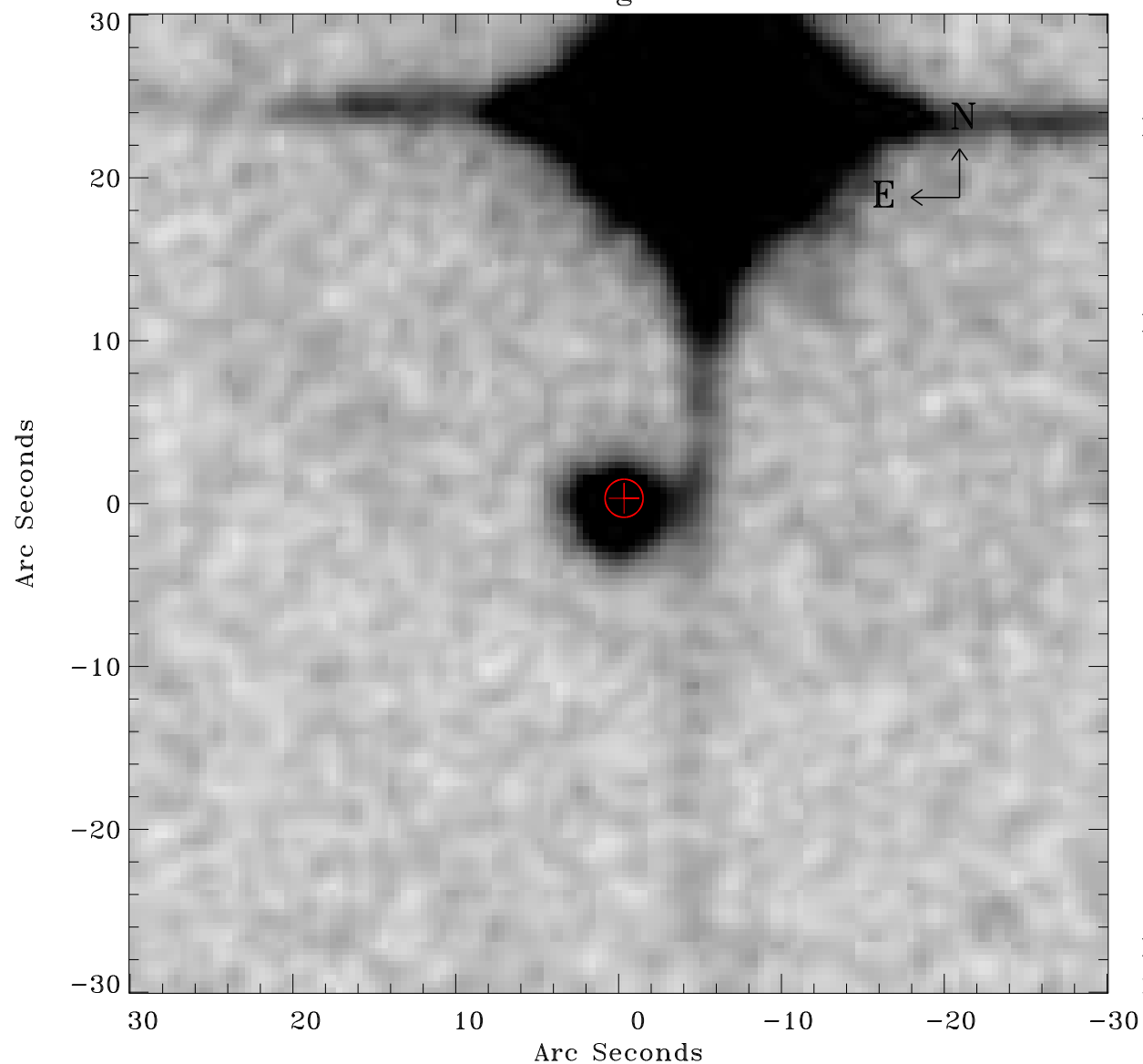


# EPIC source finding chart ACDS V10.0



Principal Investigator :

Prof Hans Boehringer

XMM target name :

SZE\_C01

OBS ID : 604873936

Source number : 2

X-ray coordinates :

$\alpha$  : 23 15 51.83

$\delta$  : -54 03 45.7

Center coordinates :

$\alpha$  : 23 15 51.83

$\delta$  : -54 03 45.6

Plate reference :

Origin : CDS HIPs Network

Plate : MAMA srcj

Pixel : 0.40 "/pix

Error circle :

$R_{90}$  (") : 1.2

XMM SSC

May 3 18:05:58 2019