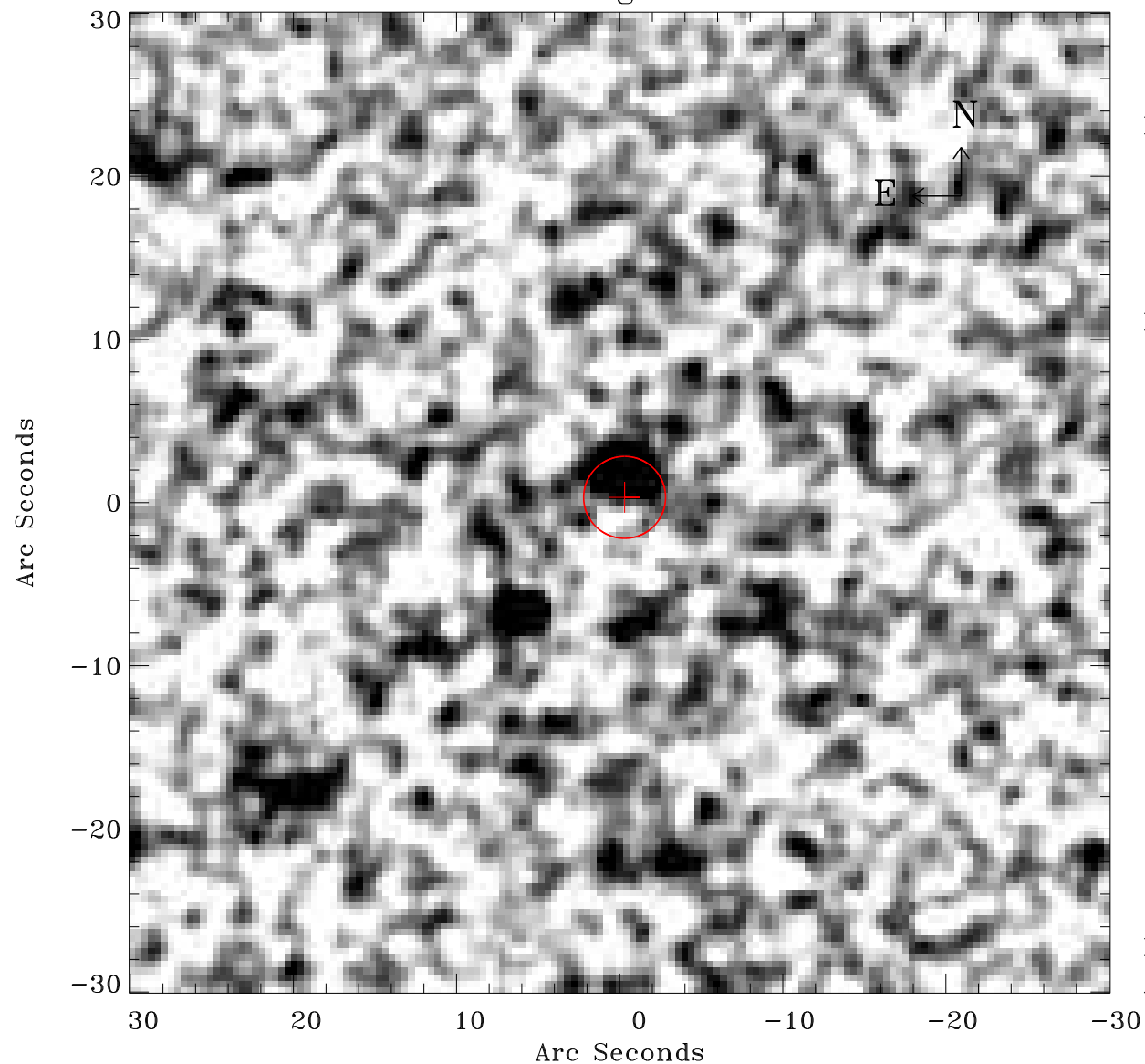


# EPIC source finding chart ACDS V10.0



Principal Investigator :

Prof Hans Boehringer

XMM target name :

SZE\_C01

OBS ID : 604873938

Source number : 2

X-ray coordinates :

$\alpha$  : 23 16 08.72

$\delta$  : -54 46 21.4

Center coordinates :

$\alpha$  : 23 16 08.70

$\delta$  : -54 46 21.3

Plate reference :

Origin : CDS HIPs Network

Plate : MAMA srcj

Pixel : 0.40 "/pix

Error circle :

$R_{90}$  (") : 2.5

XMM SSC

Apr 23 19:54:51 2019