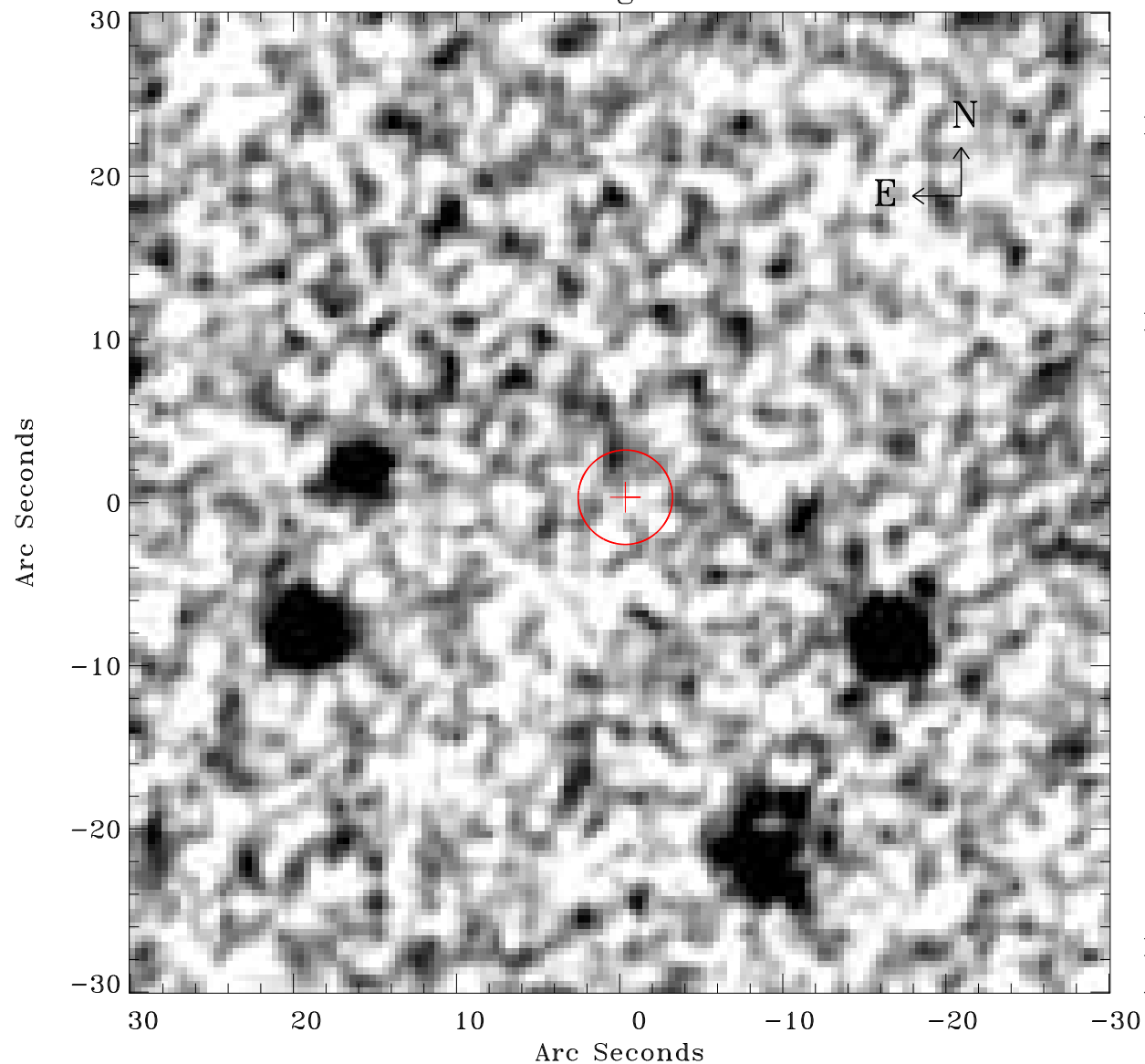


# EPIC source finding chart ACDS V10.0



Principal Investigator :

Prof Hans Boehringer

XMM target name :

SZE\_C01

OBS ID : 604873938

Source number : 9

X-ray coordinates :

$\alpha$  : 23 17 56.12

$\delta$  : -54 43 05.7

Center coordinates :

$\alpha$  : 23 17 56.11

$\delta$  : -54 43 05.7

Plate reference :

Origin : CDS HIPs Network

Plate : MAMA srcj

Pixel : 0.40 "/pix

Error circle :

$R_{90}$  (") : 2.9

XMM SSC

Apr 23 19:56:45 2019