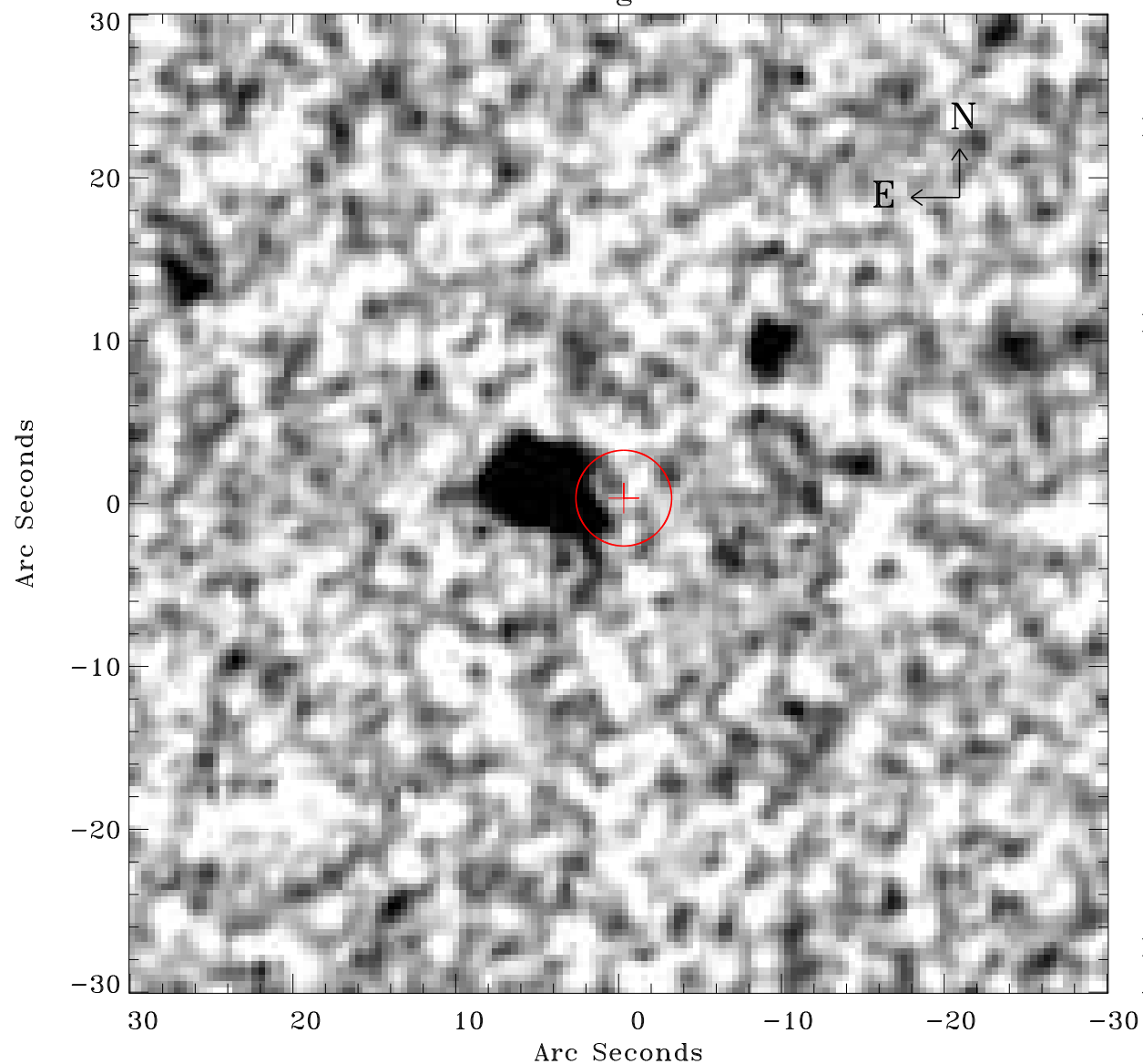


# EPIC source finding chart ACDS V10.0



Principal Investigator :

Prof Hans Boehringer

XMM target name :

SZE\_C01

OBS ID : 604873941

Source number : 17

X-ray coordinates :

$\alpha$  : 23 17 08.09

$\delta$  : -55 54 58.7

Center coordinates :

$\alpha$  : 23 17 08.08

$\delta$  : -55 54 58.7

Plate reference :

Origin : CDS HIPs Network

Plate : MAMA srcj

Pixel : 0.40 "/pix

Error circle :

$R_{90}$  (") : 2.9

XMM SSC

Apr 29 00:51:21 2019