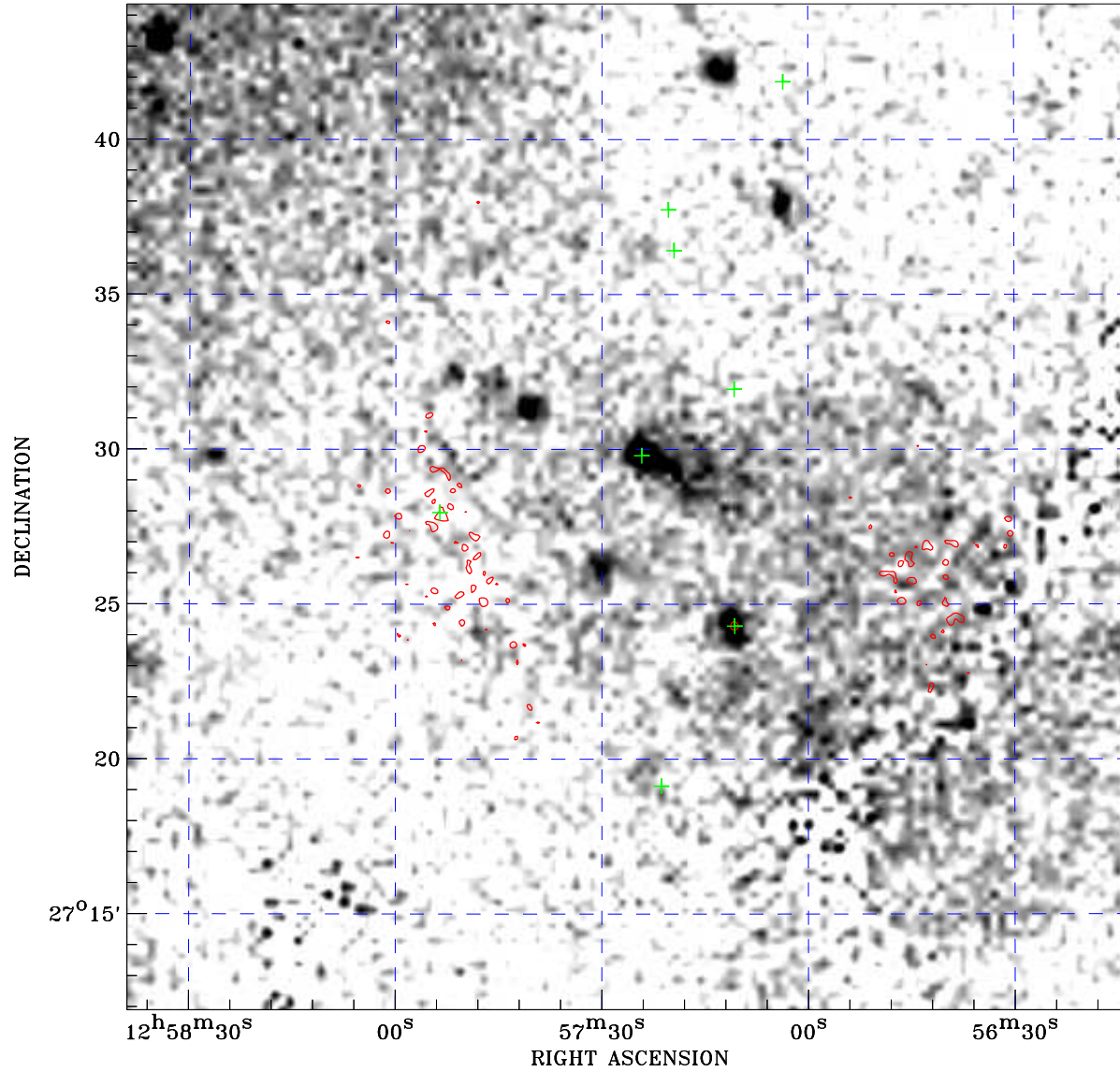



PDF XMM ROSAT image ACDS V10.0



ROSAT image gray scale (Log) :

 < 2.550E-04 > 8.872E-04
 (counts s⁻¹)

⊙ Epic image contour
 levels at 2, 7 and 30 σ

+ Detected Epic sources

Principal Investigator :
 Dr William Forman

XMM target name :
 NGC4839

Observation ID :
 0652310501

Epic image :
 α : 12 57 25.93
 δ : +27 28 08.9
 Energy band : 0.2–12.0 keV
 MOS1 : 2938 s
 MOS2 : 3445 s
 PN : 0 s

Contour levels (counts) :
 2 σ :5.131E+00 7 σ :1.224E+01
 30 σ 4.494E+01

Nearest ROSAT image
 from Epic image center :
 Observation : 800009p
 Instrument : PSPCB
 α : 12 57 56.75
 δ : +27 32 59.7

Other ROSAT images :
 None

XMM SSC
 May 2 15:17:45 2019