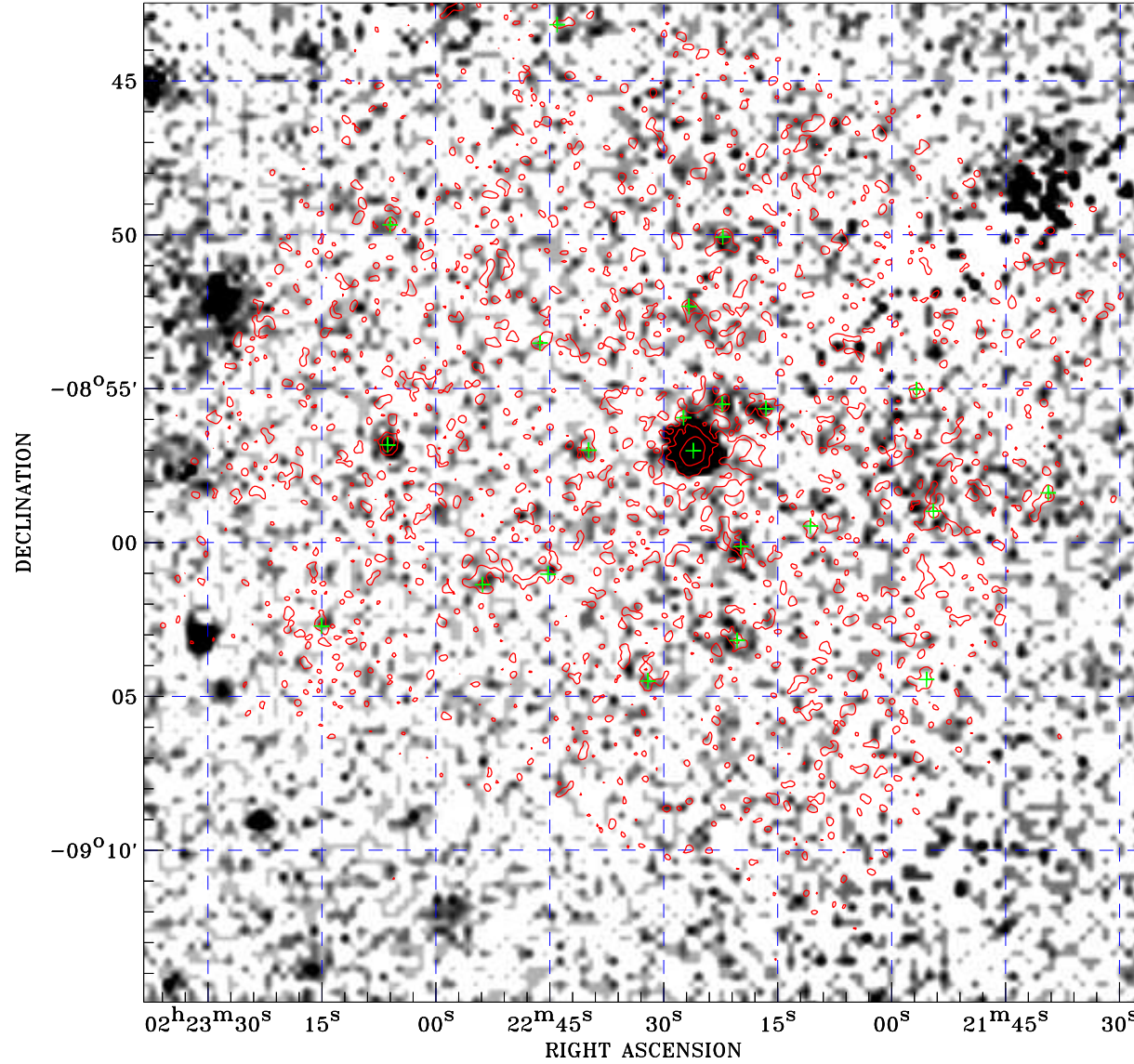



PDF XMM ROSAT image ACDS V10.0



ROSAT image gray scale (Log) :

 $\langle 4.302\text{E}-05$ $\rangle 2.768\text{E}-04$
(counts s⁻¹)

⊙ Epic image contour
levels at 2, 7 and 30 σ

+ Detected Epic sources

Principal Investigator :
Dr ALEXIS FINO GUENOV

XMM target name :
CFHTLS-W1

Observation ID :
0655343851

Epic image :
 α : 02 22 32.68
 δ : -08 58 42.3
Energy band : 0.2-12.0 keV
MOS1 : 2743 s
MOS2 : 2743 s
PN : 2697 s

Contour levels (counts) :
2 σ :3.228E-01 7 σ :8.259E-01
30 σ 3.140E+00

Nearest ROSAT image
from Epic image center :
Observation : 800016p
Instrument : PSPCB
 α : 02 23 33.77
 δ : -09 06 00.2

Other ROSAT images :
None

XMM SSC
Jan 20 09:36:46 2025