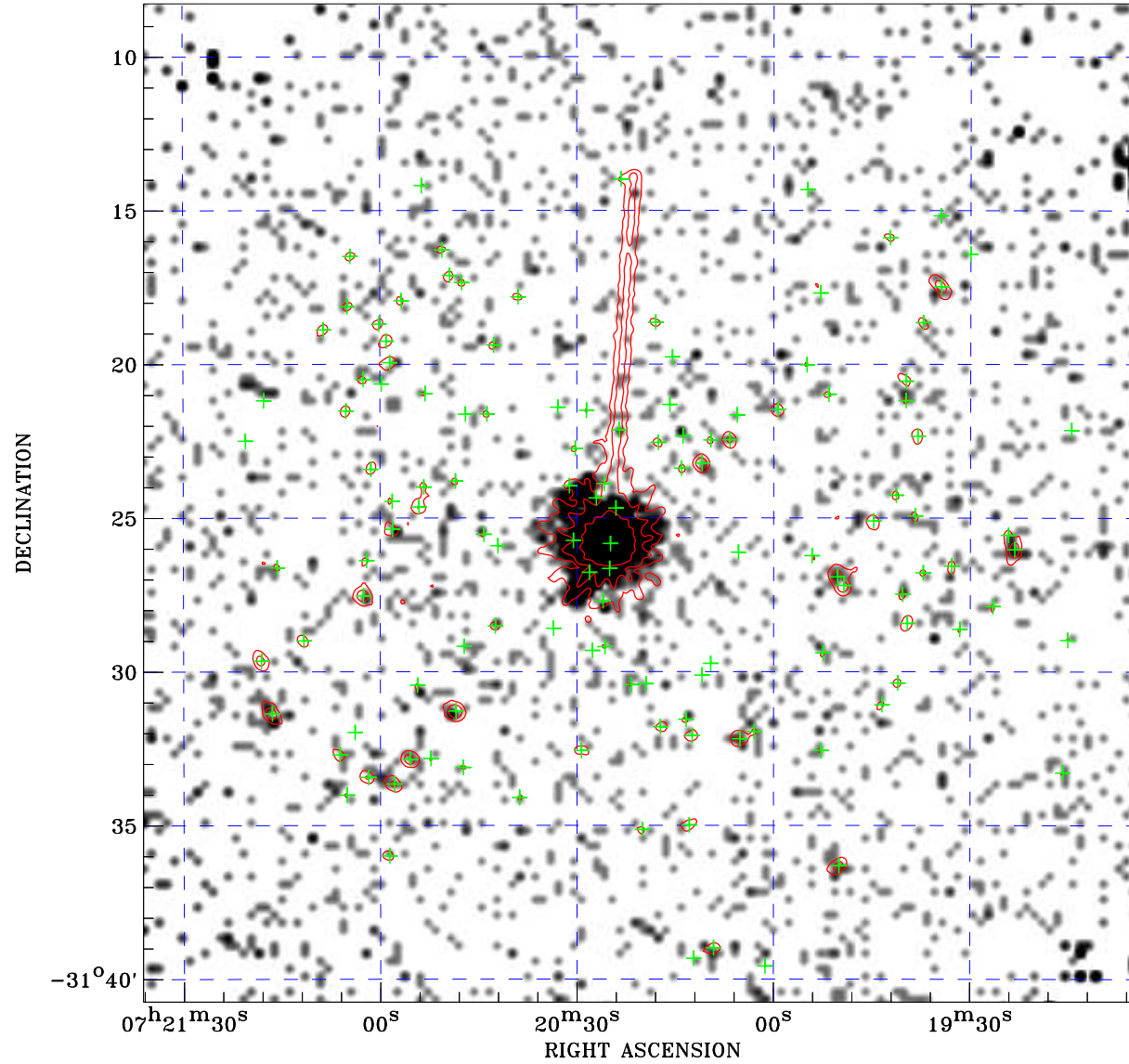



PDF XMM ROSAT image ACDS V10.0



ROSAT image gray scale (Log) :

 $\langle 6.687\text{E}-05$ $\rangle 7.948\text{E}-04$
 (counts s⁻¹)

⊙ Epic image contour
 levels at 2, 7 and 30 σ

+ Detected Epic sources

Principal Investigator :
 Mr Markus Hohle

XMM target name :
 RX J0720.4-3125

Observation ID :
 0670700301

Epic image :
 α : 07 20 19.97
 δ : -31 24 31.1
 Energy band : 0.2-12.0 keV
 MOS1 : 26595 s
 MOS2 : 26608 s
 PN : 25021 s

Contour levels (counts) :
 2 σ :2.634E+00 7 σ :6.778E+00
 30 σ 2.584E+01

Nearest ROSAT image
 from Epic image center :
 Observation : 300338p
 Instrument : PSPCB
 α : 07 20 38.09
 δ : -31 28 48.2

Other ROSAT images :
 None

XMM SSC
 Apr 25 11:38:12 2019