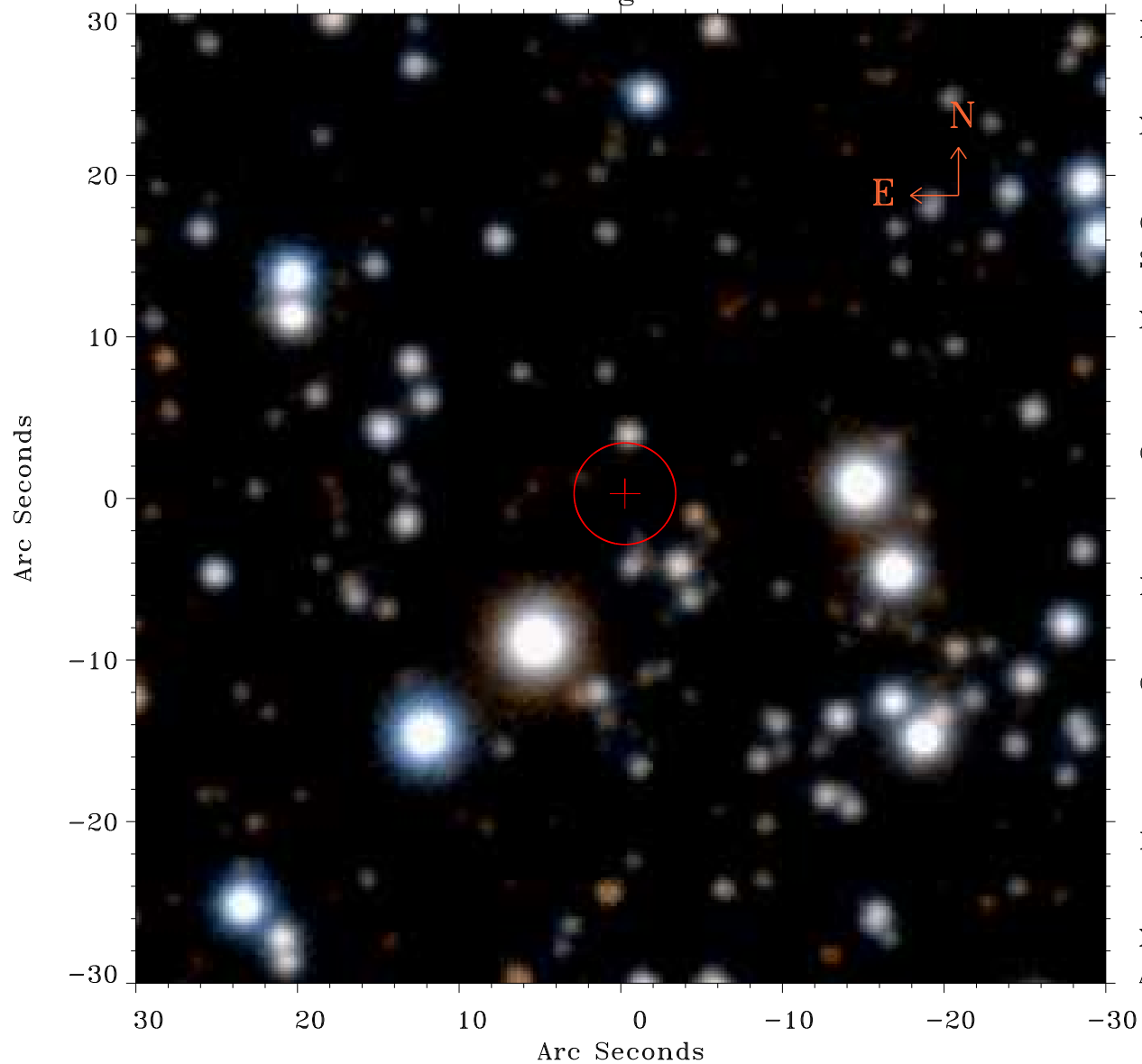


# EPIC source finding chart ACDS V10.0



Principal Investigator :  
Prof Douglas Finkbeiner

XMM target name :  
Fermi Bubble 2

OBS ID : 672400137  
Source number : 8

X-ray coordinates :  
 $\alpha$  : 17 46 58.48  
 $\delta$  : -13 47 46.8

Center coordinates :  
 $\alpha$  : 17 46 58.49  
 $\delta$  : -13 47 46.9

Plate reference :  
Origin : PanSTARRS-DR1

Color coding :  
z band ●  
(z+g)/2 ●  
g band ●

Error:  
R90 : 3.1 arcsec

XMM SSC  
Apr 22 20:52:24 2019