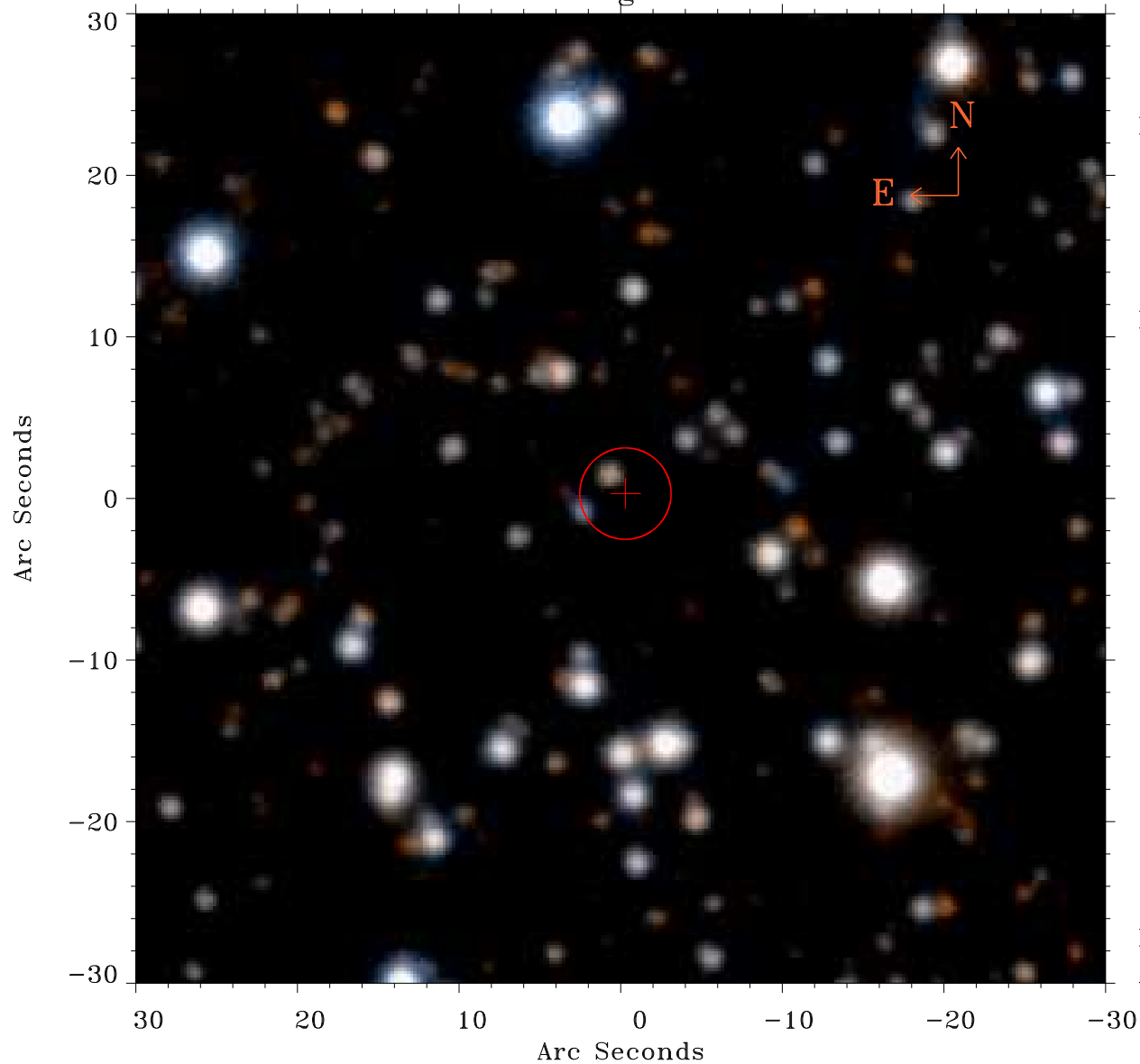


EPIC source finding chart ACDS V10.0



Principal Investigator :
Prof Douglas Finkbeiner

XMM target name :
Fermi Bubble 2

OBS ID : 672400137
Source number : 7

X-ray coordinates :
 α : 17 46 55.40
 δ : -13 31 09.4

Center coordinates :
 α : 17 46 55.41
 δ : -13 31 09.5

Plate reference :
Origin : PanSTARRS-DR1

Color coding :
z band ●
(z+g)/2 ●
g band ●

Error:
R90 : 2.8 arcsec

XMM SSC
Apr 22 20:52:09 2019