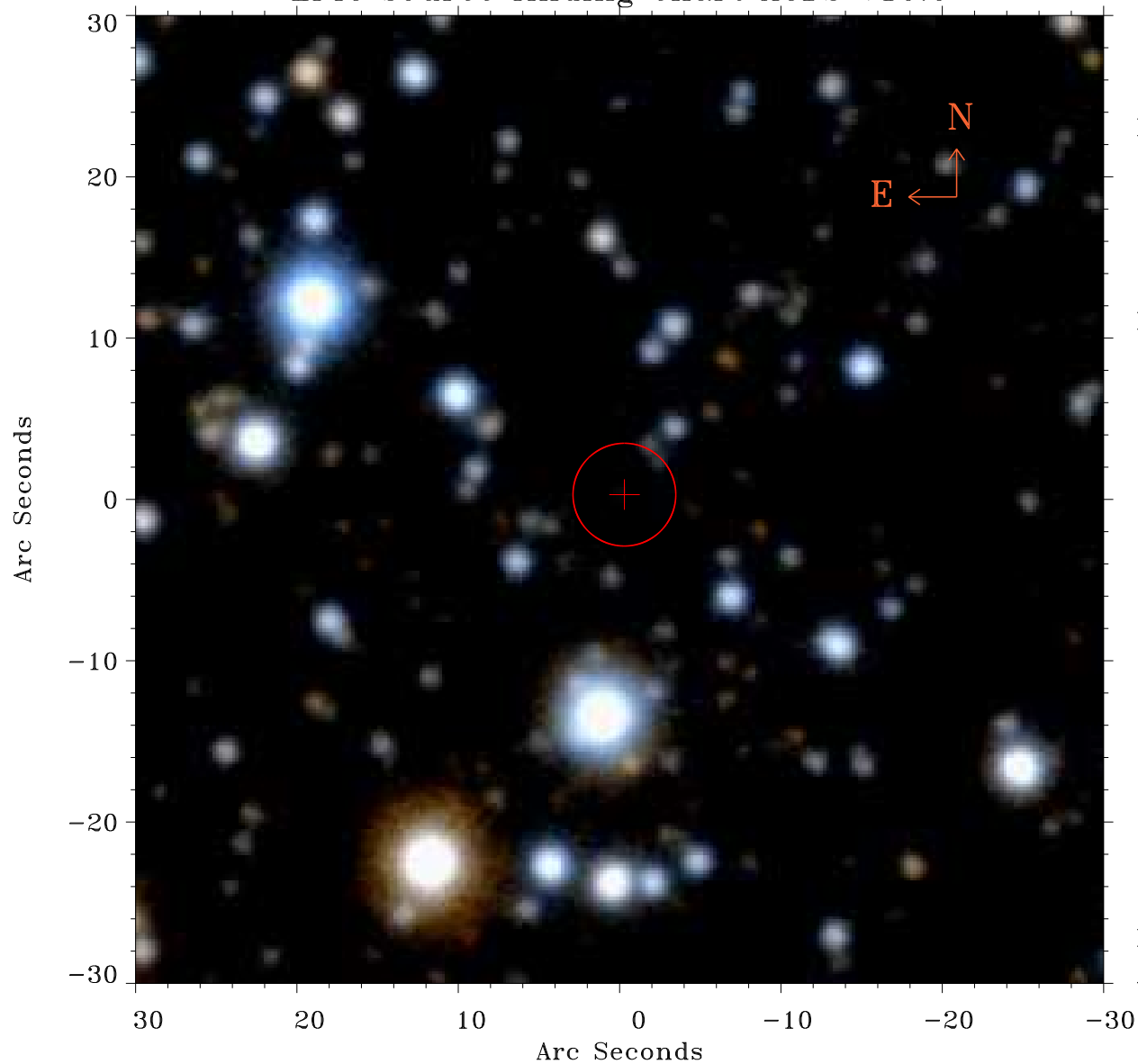


# EPIC source finding chart ACDS V10.0



Principal Investigator :  
Prof Douglas Finkbeiner

XMM target name :  
Fermi Bubble 2

OBS ID : 672400137  
Source number : 18

X-ray coordinates :  
 $\alpha$  : 17 47 49.78  
 $\delta$  : -13 42 09.0

Center coordinates :  
 $\alpha$  : 17 47 49.78  
 $\delta$  : -13 42 09.1

Plate reference :  
Origin : PanSTARRS-DR1

Color coding :  
z band ●  
(z+g)/2 ●  
g band ●

Error:  
R90 : 3.2 arsec

XMM SSC  
Apr 22 20:55:15 2019