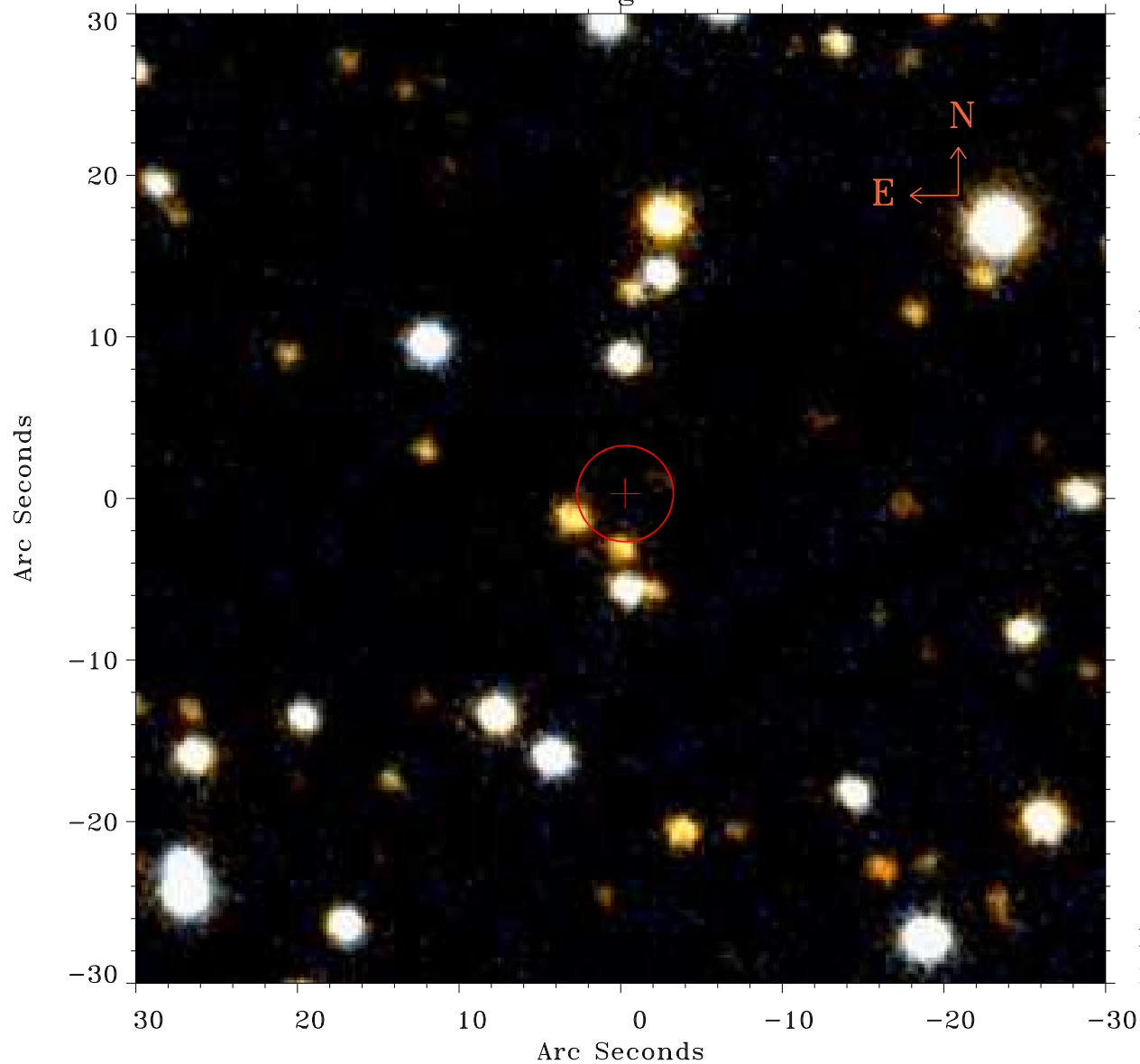


# EPIC source finding chart ACDS V10.0



Principal Investigator :

Dr Scott Wolk

XMM target name :

Ceph OB3b North

OBS ID : 672960101

Source number : 105

X-ray coordinates :

$\alpha$  : 22 54 52.13

$\delta$  : +62 44 21.7

Center coordinates :

$\alpha$  : 22 54 52.14

$\delta$  : +62 44 21.6

Plate reference :

Origin : PanSTARRS-DR1

Color coding :

z band ●

(z+g)/2 ●

g band ●

Error:

R90 : 3.0 arsec

XMM SSC

May 2 14:08:11 2019