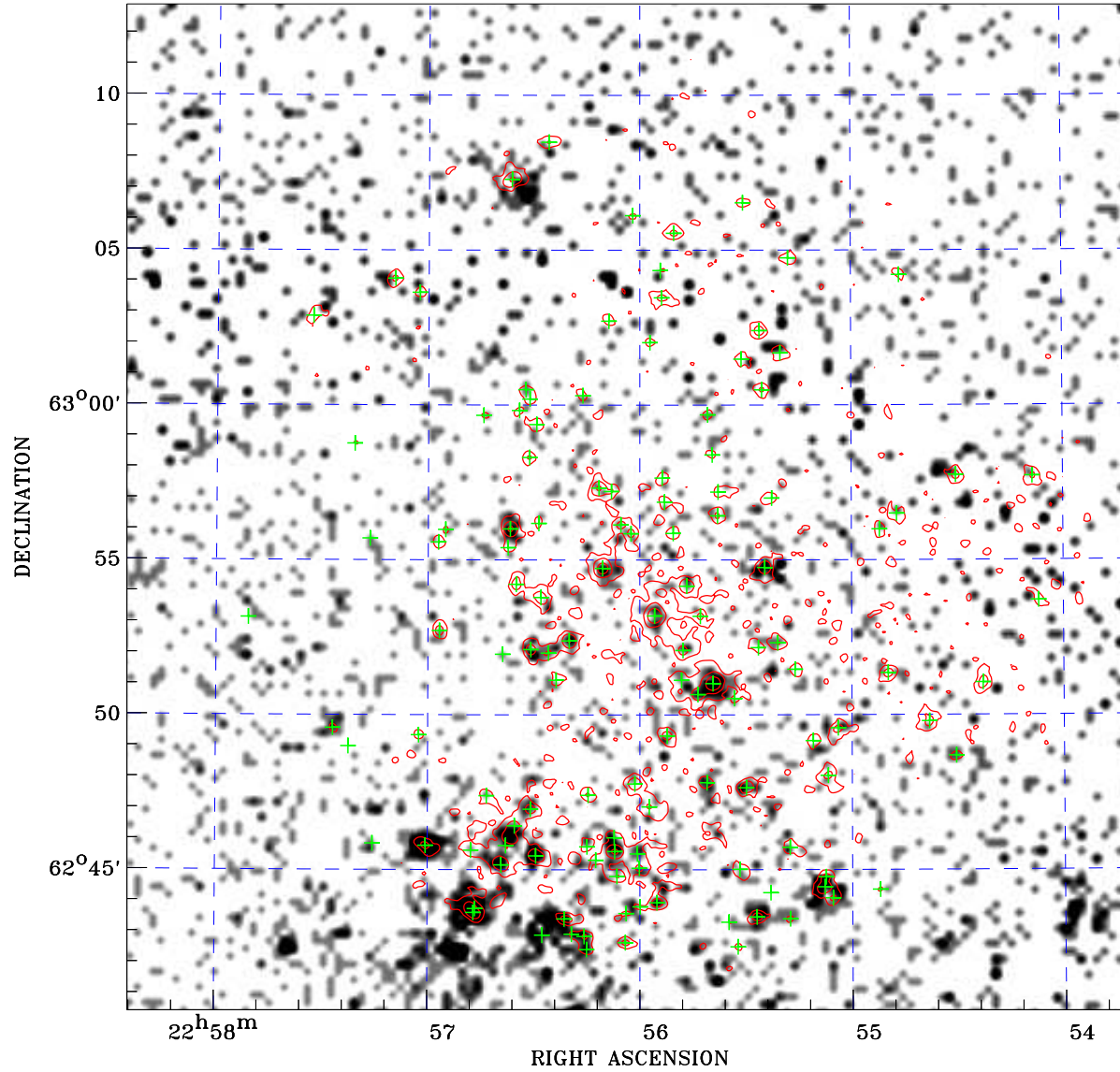



# PDF XMM ROSAT image ACDS V10.0



ROSAT image gray scale (Log) :  
  
 $\langle 6.545\text{E-}05$   $\rangle 5.344\text{E-}04$   
 (counts s<sup>-1</sup>)

⊙ Epic image contour  
 levels at 2, 7 and 30 $\sigma$

+ Detected Epic sources

Principal Investigator :  
 Dr Scott Wolk

XMM target name :  
 Ceph OB3b North

Observation ID :  
 0672960101

Epic image :  
 $\alpha$  : 22 56 02.82  
 $\delta$  : +62 56 43.2  
 Energy band : 0.2–12.0 keV  
 MOS1 : 23598 s  
 MOS2 : 26414 s  
 PN : 10310 s

Contour levels (counts) :  
 2 $\sigma$  :1.706E+00 7 $\sigma$  :3.936E+00  
 30 $\sigma$  :1.420E+01

Nearest ROSAT image  
 from Epic image center :  
 Observation : 900425p  
 Instrument : PSPCB  
 $\alpha$  : 22 57 23.78  
 $\delta$  : +62 40 47.6

Other ROSAT images :  
 None

XMM SSC  
 May 2 14:07:19 2019