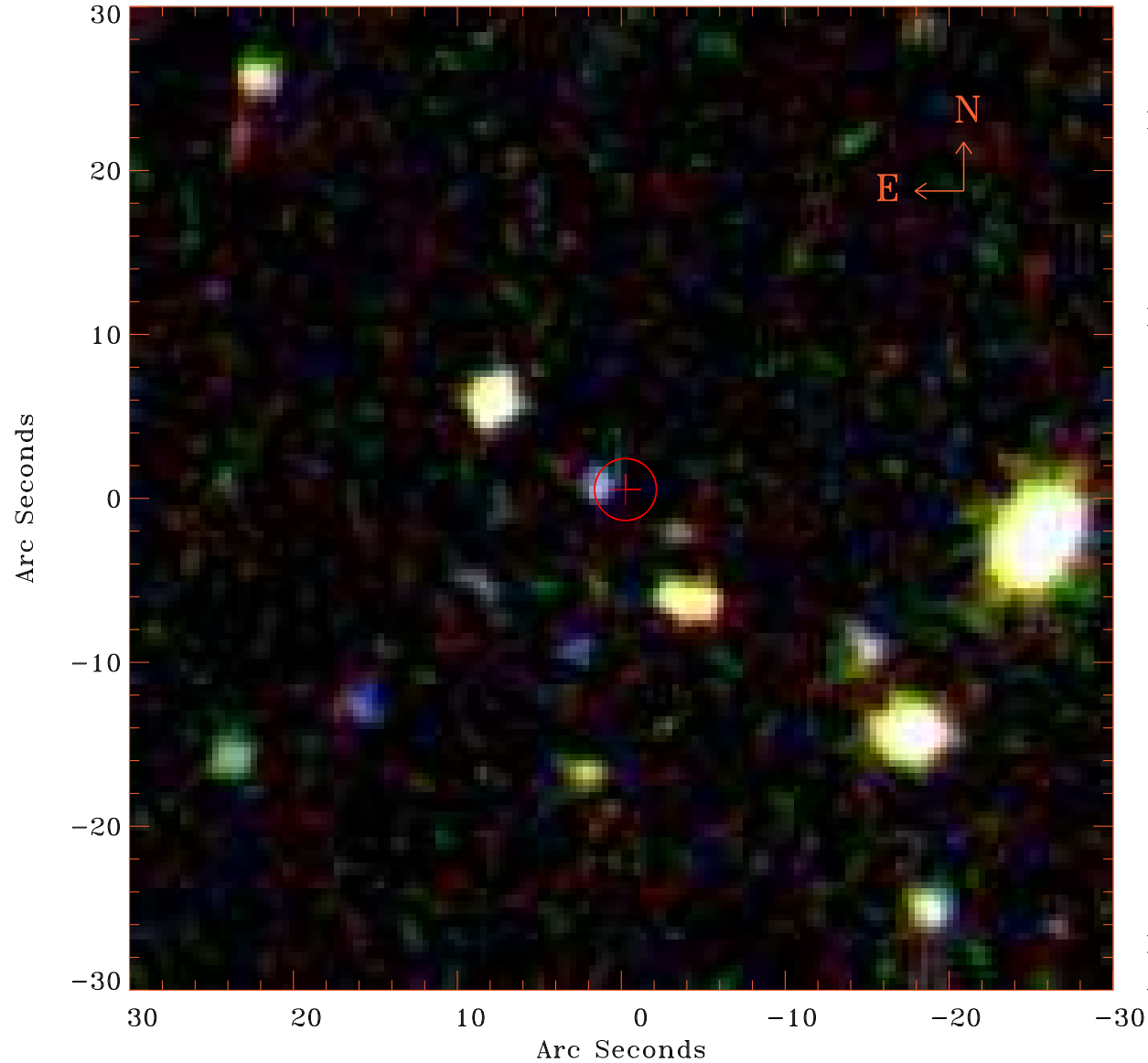


# EPIC source finding chart V10.0



Principal Investigator :

Dr Brendan Miller

XMM target name :

B2 1404+25A

OBS ID : 674740101

Source number : 98

X-ray coordinates :

$\alpha$  : 14 06 28.56

$\delta$  : +25 06 23.1

Center coordinates :

$\alpha$  : 14 06 28.55

$\delta$  : +25 06 23.0

Plate reference :

Origin : SDSS

Color coding :

i band ●

r band ●

g band ●

Error circle :

$R_{90}$  (") : 1.9

XMM SSC

Apr 23 21:12:23 2019