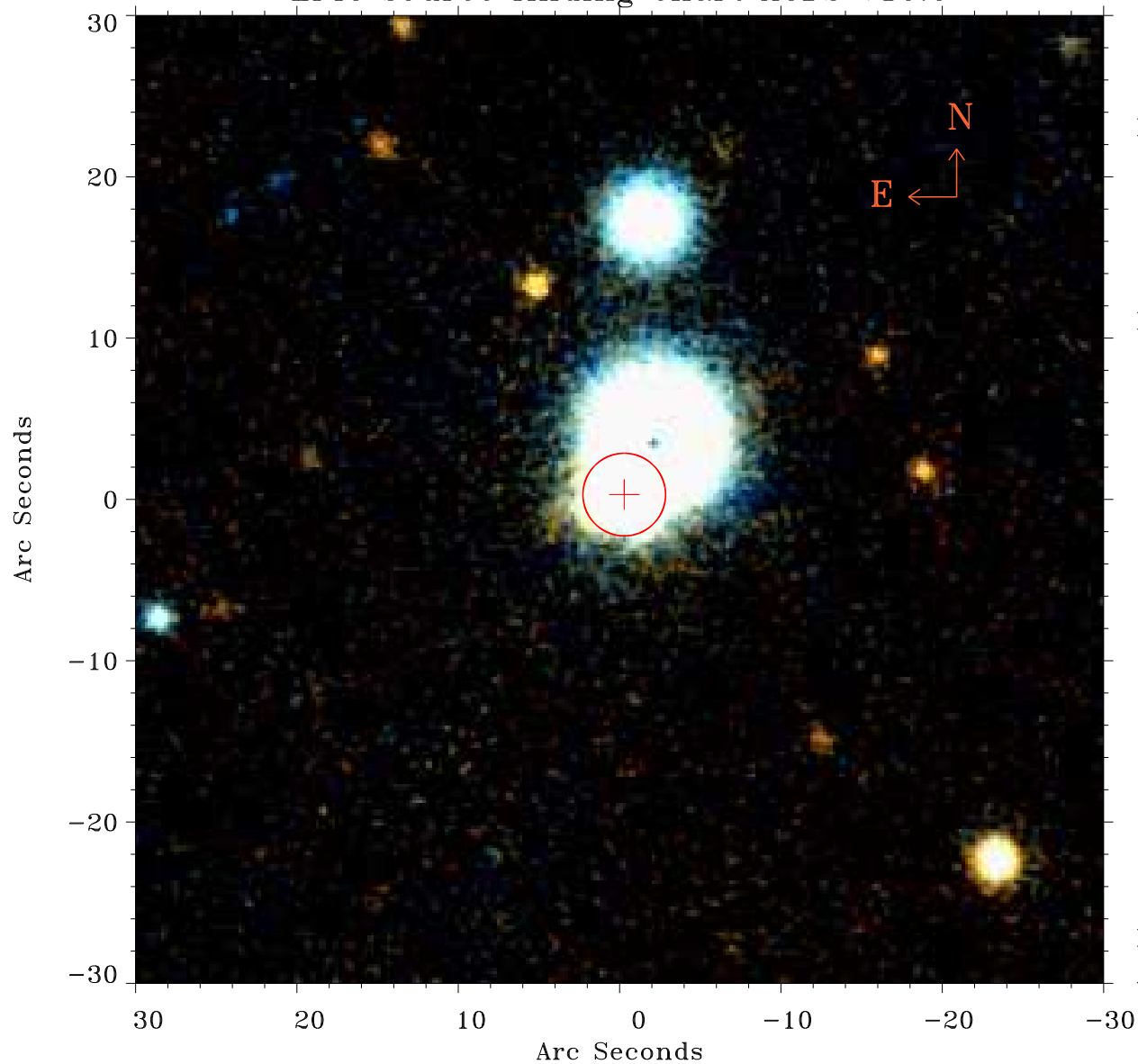


# EPIC source finding chart ACDS V10.0



Principal Investigator :

Prof Hans Boehringer

XMM target name :

RXCJ0552.8-2103

OBS ID : 675470101

Source number : 15

X-ray coordinates :

$\alpha$  : 05 51 59.36

$\delta$  : -21 02 03.8

Center coordinates :

$\alpha$  : 05 51 59.37

$\delta$  : -21 02 03.9

Plate reference :

Origin : PanSTARRS-DR1

Color coding :

z band ●

(z+g)/2 ●

g band ●

Error:

R90 : 2.6 arcsec

XMM SSC

Apr 18 14:54:29 2019