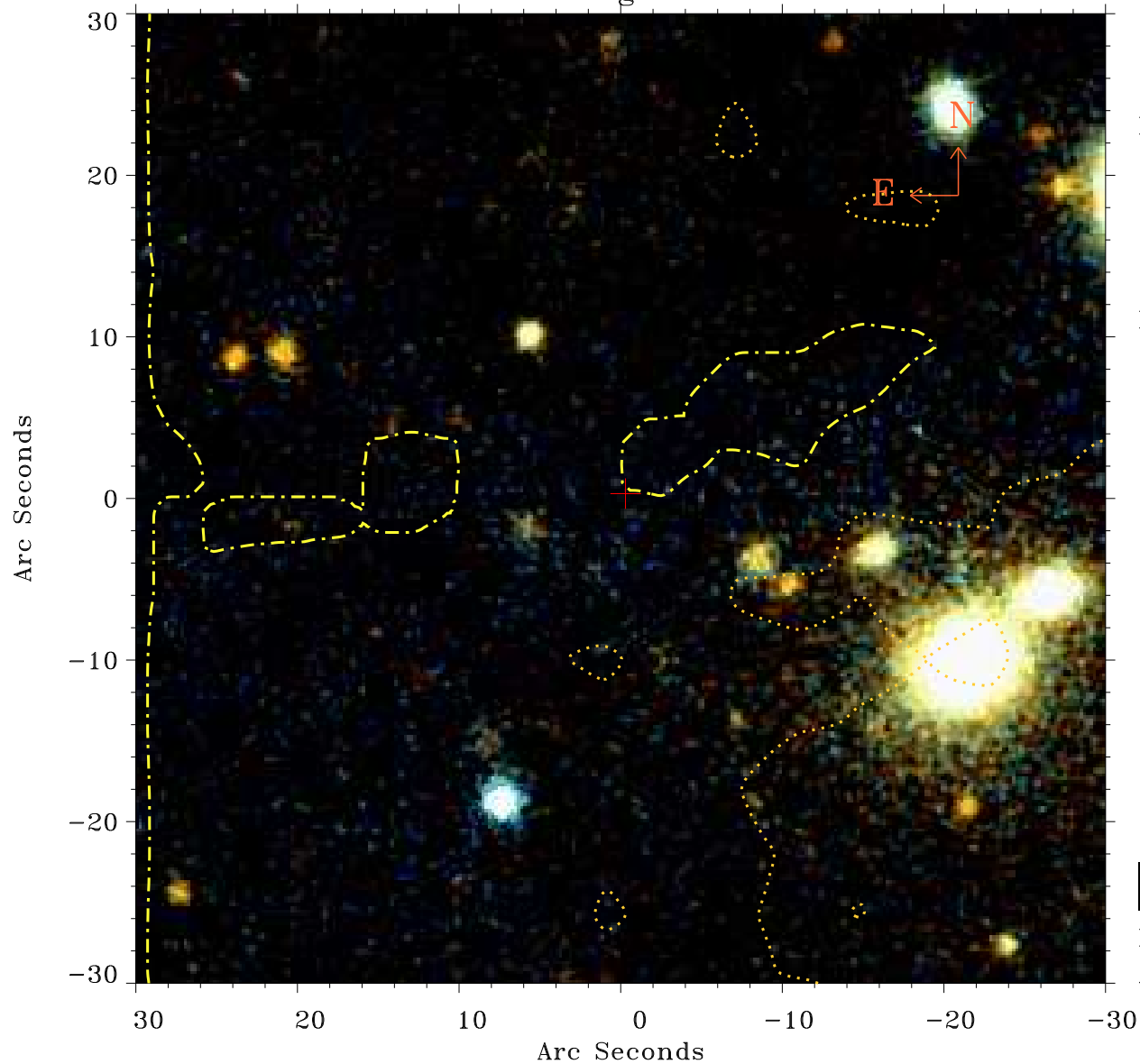


# EPIC source finding chart ACDS V10.0



Principal Investigator :

Prof Hans Boehringer

XMM target name :

RXCJ1558.3-1410

OBS ID : 675470201

Source number : 5

X-ray coordinates :

$\alpha$  : 15 58 25.78

$\delta$  : -14 09 29.5

Center coordinates :

$\alpha$  : 15 58 25.79

$\delta$  : -14 09 29.6

Plate reference :

Origin : PanSTARRS-DR1

Color coding :

z band ●

(z+g)/2 ●

g band ●

Contour levels (counts) :



XMM SSC

Apr 22 01:27:59 2019