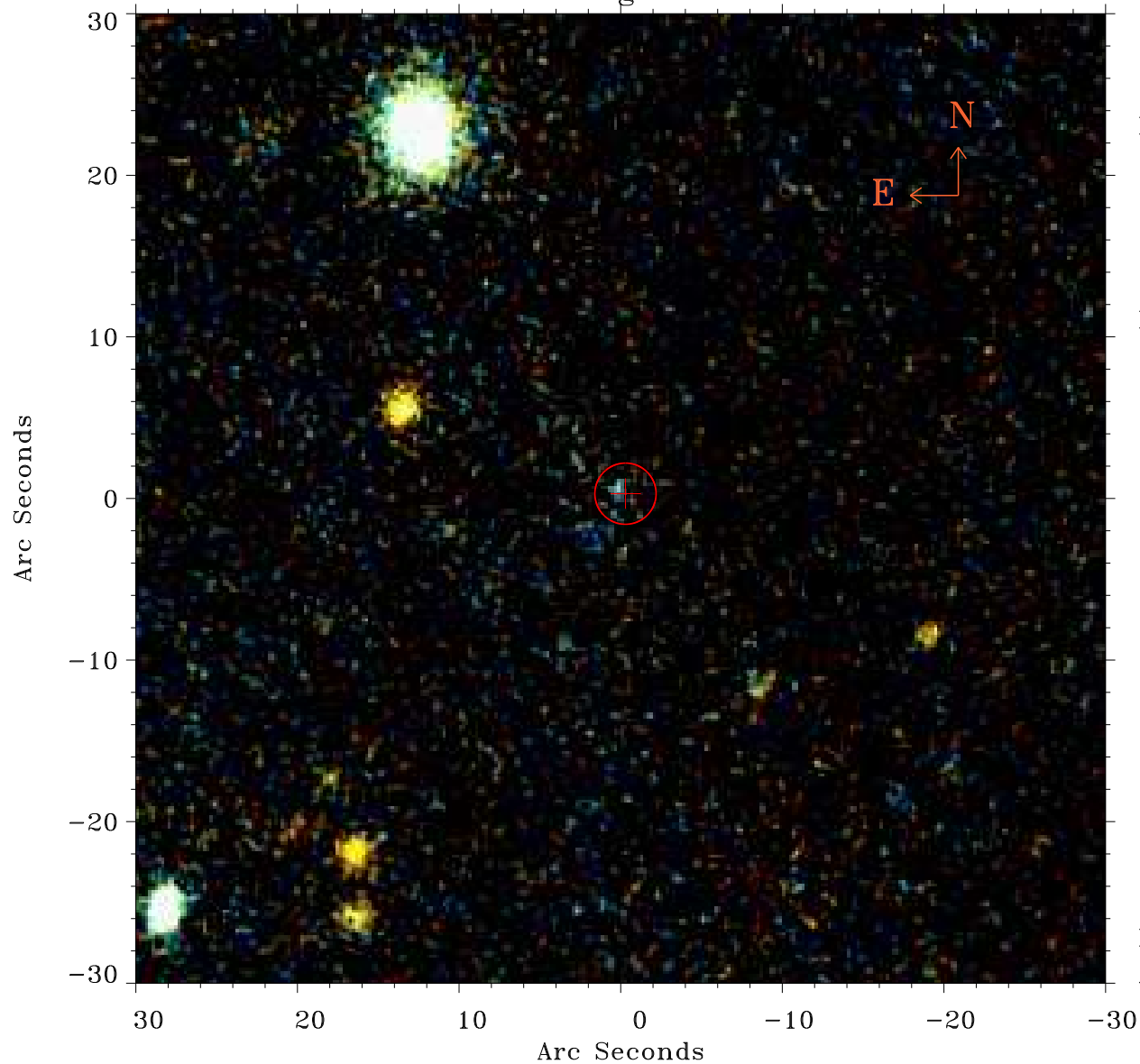


# EPIC source finding chart ACDS V10.0



Principal Investigator :

Prof Hans Boehringer

XMM target name :

RXCJ0011.3-2851

OBS ID : 675470801

Source number : 14

X-ray coordinates :

$\alpha$  : 00 11 40.63

$\delta$  : -28 49 26.9

Center coordinates :

$\alpha$  : 00 11 40.63

$\delta$  : -28 49 27.0

Plate reference :

Origin : PanSTARRS-DR1

Color coding :

z band ●

(z+g)/2 ●

g band ●

Error:

R90 : 1.9 arcsec

XMM SSC

Apr 22 06:25:26 2019