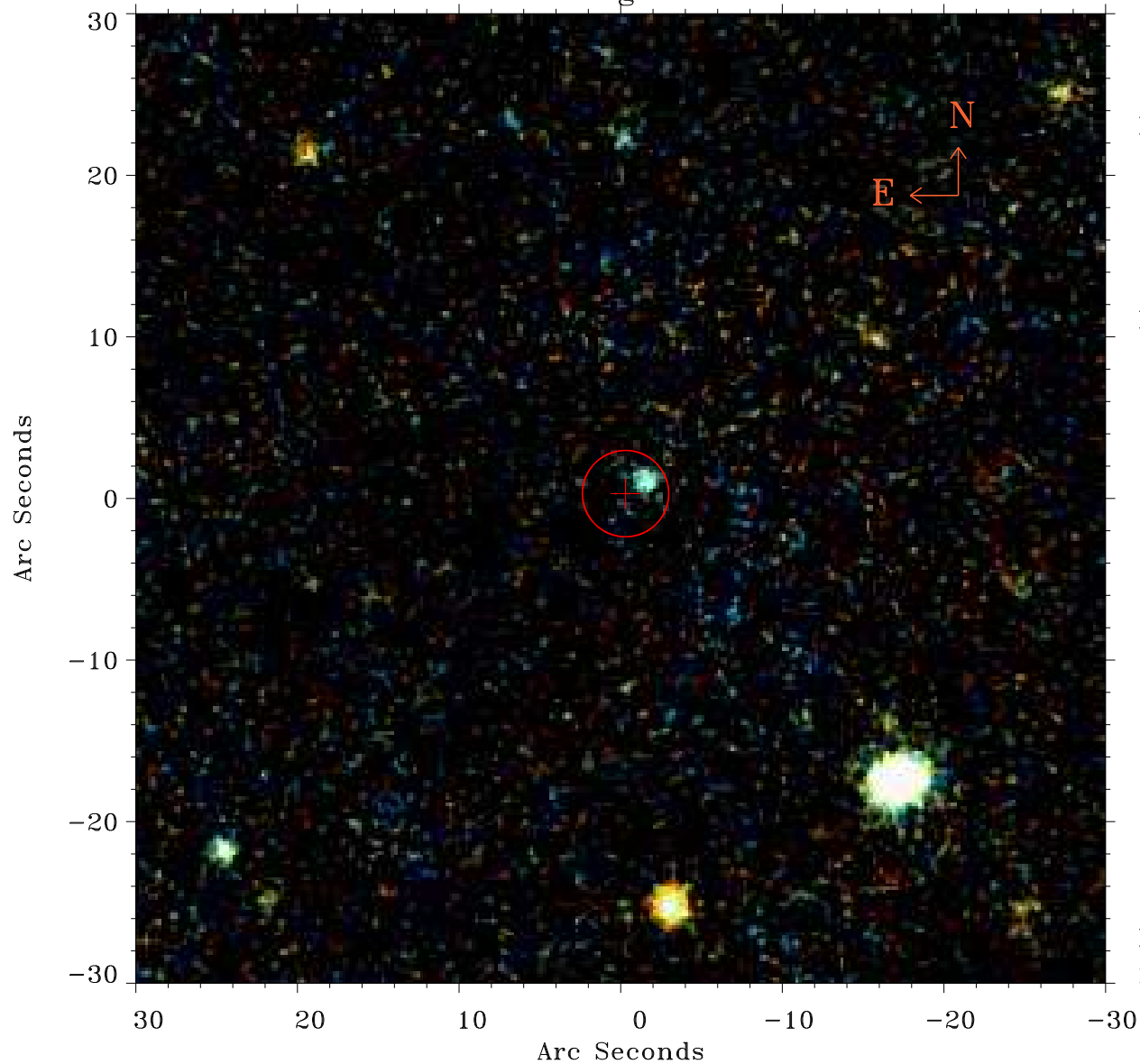


# EPIC source finding chart ACDS V10.0



Principal Investigator :

Dr Marguerite Pierre

XMM target name :

XXLn053

OBS ID : 677630136

Source number : 28

X-ray coordinates :

$\alpha$  : 02 05 35.40

$\delta$  : -04 46 12.8

Center coordinates :

$\alpha$  : 02 05 35.41

$\delta$  : -04 46 12.9

Plate reference :

Origin : PanSTARRS-DR1

Color coding :

z band ●

(z+g)/2 ●

g band ●

Error:

R90 : 2.7 arcsec

XMM SSC

May 1 19:18:41 2019