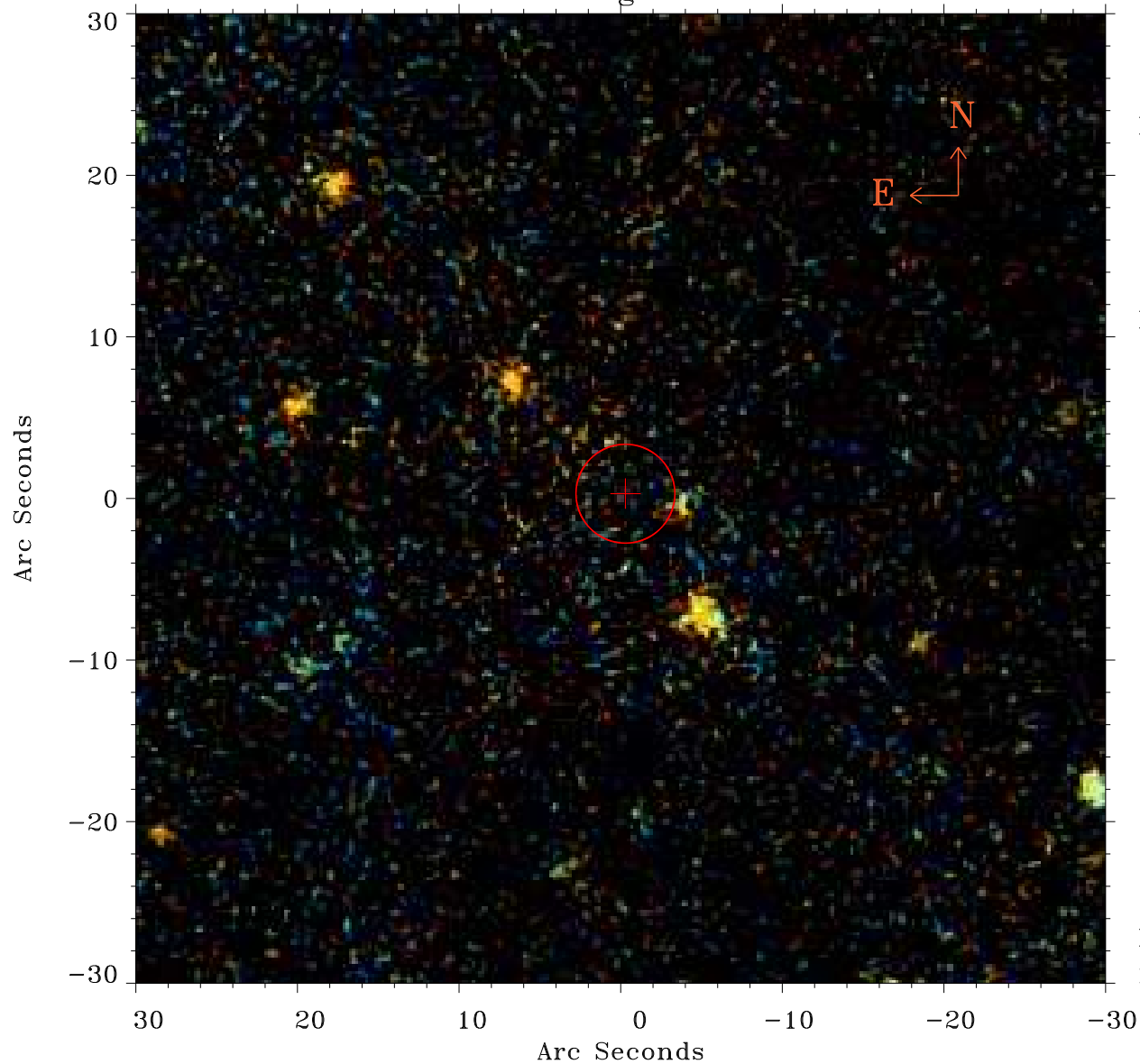


# EPIC source finding chart ACDS V10.0



Principal Investigator :

Dr Marguerite Pierre

XMM target name :

XXLn053

OBS ID : 677630136

Source number : 65

X-ray coordinates :

$\alpha$  : 02 06 54.04

$\delta$  : -04 45 10.1

Center coordinates :

$\alpha$  : 02 06 54.04

$\delta$  : -04 45 10.2

Plate reference :

Origin : PanSTARRS-DR1

Color coding :

z band ●

(z+g)/2 ●

g band ●

Error:

R90 : 3.0 arsec

XMM SSC

May 1 19:24:31 2019