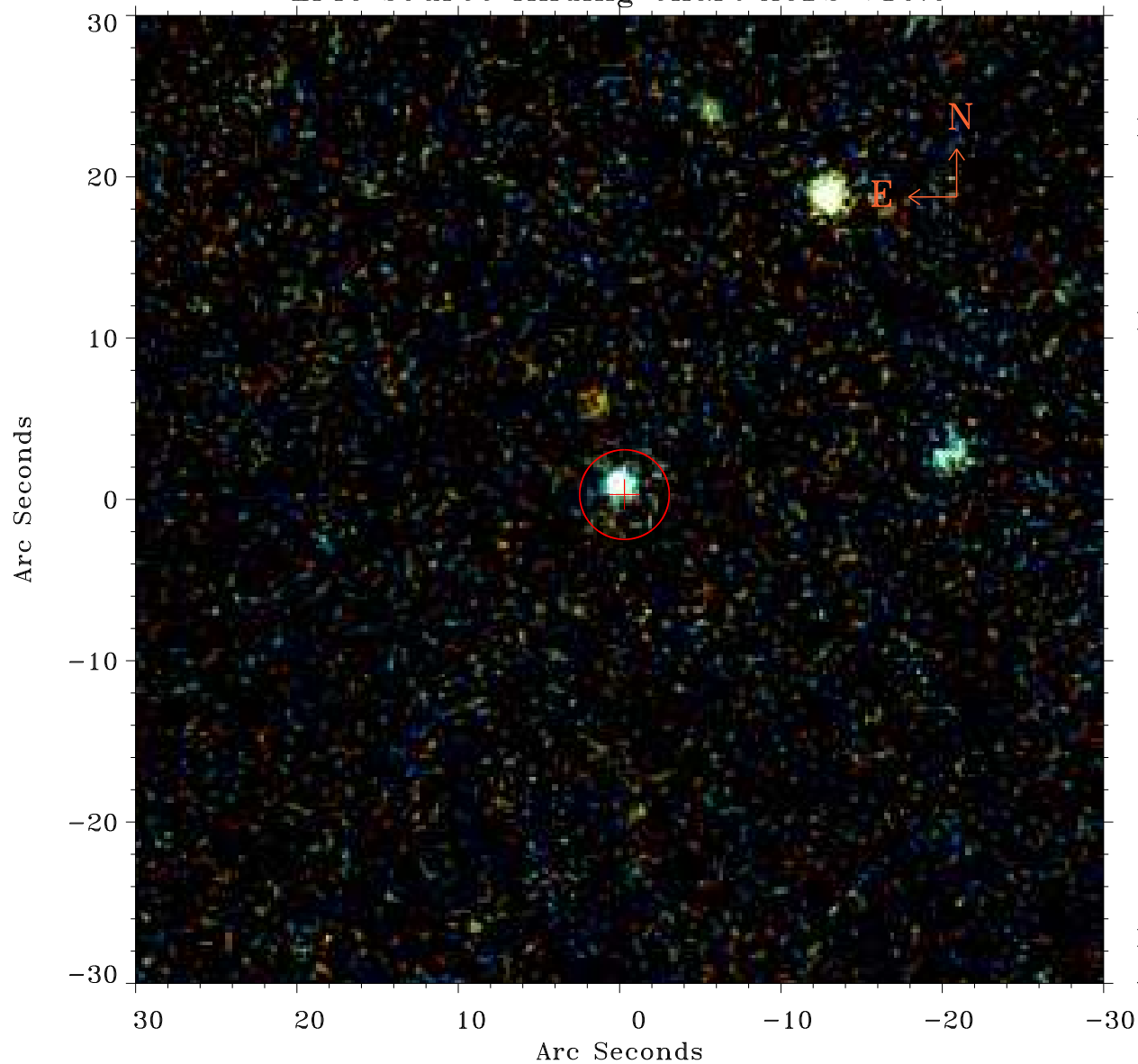


# EPIC source finding chart ACDS V10.0



Principal Investigator :

Dr Marguerite Pierre

XMM target name :

XXLn053

OBS ID : 677631232

Source number : 16

X-ray coordinates :

$\alpha$  : 02 12 38.04

$\delta$  : -04 54 47.4

Center coordinates :

$\alpha$  : 02 12 38.05

$\delta$  : -04 54 47.5

Plate reference :

Origin : PanSTARRS-DR1

Color coding :

z band ●

(z+g)/2 ●

g band ●

Error:

R90 : 2.8 arsec

XMM SSC

Apr 28 16:54:04 2019