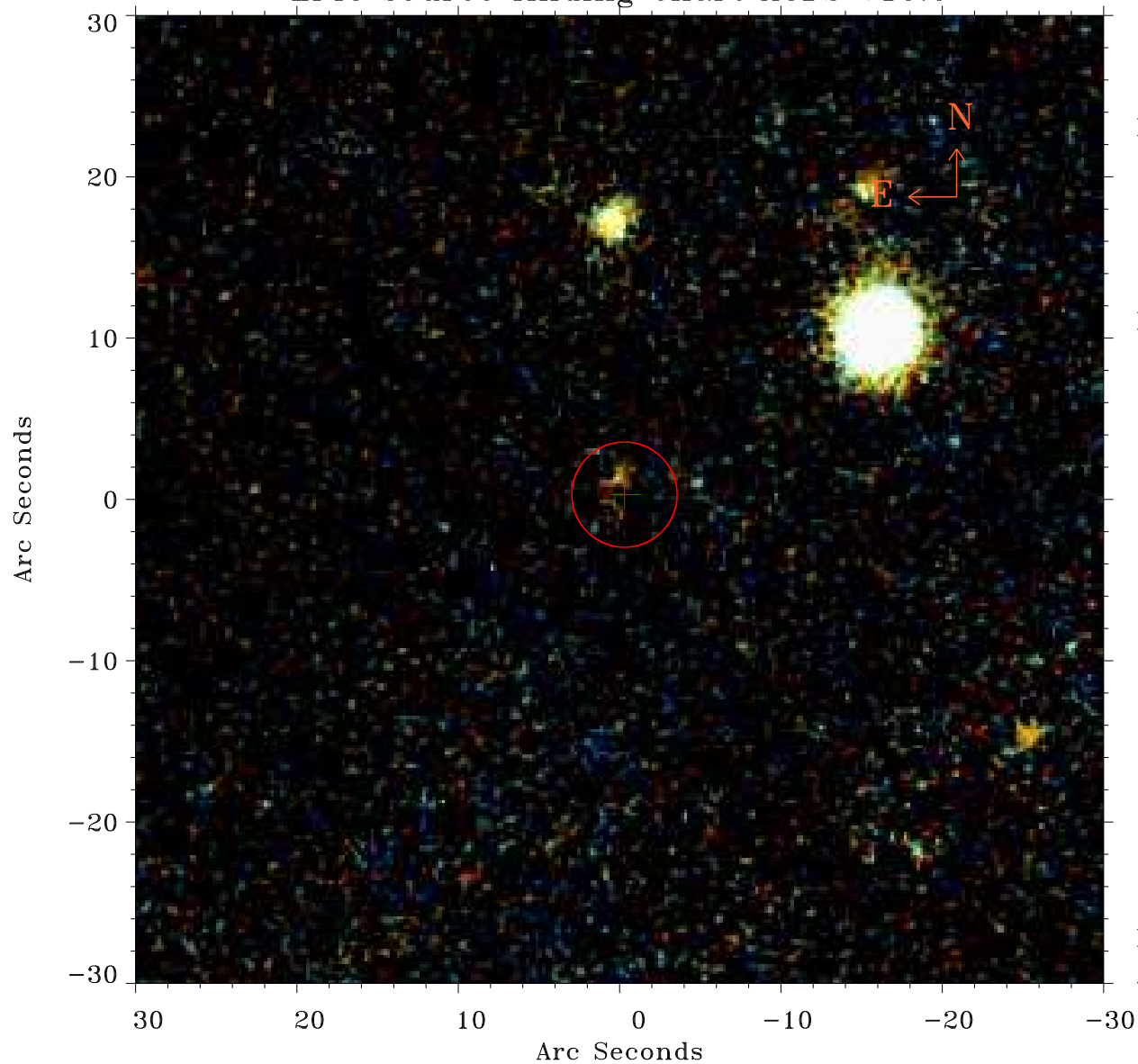


# EPIC source finding chart ACDS V10.0



Principal Investigator :

Dr Marguerite Pierre

XMM target name :

XXLn055

OBS ID : 677631501

Source number : 16

X-ray coordinates :

$\alpha$  : 02 12 16.05

$\delta$  : -04 57 45.3

Center coordinates :

$\alpha$  : 02 12 16.06

$\delta$  : -04 57 45.4

Plate reference :

Origin : PanSTARRS-DR1

Color coding :

z band ●

(z+g)/2 ●

g band ●

Error:

R90 : 3.2 arsec

XMM SSC

Apr 21 13:36:25 2019