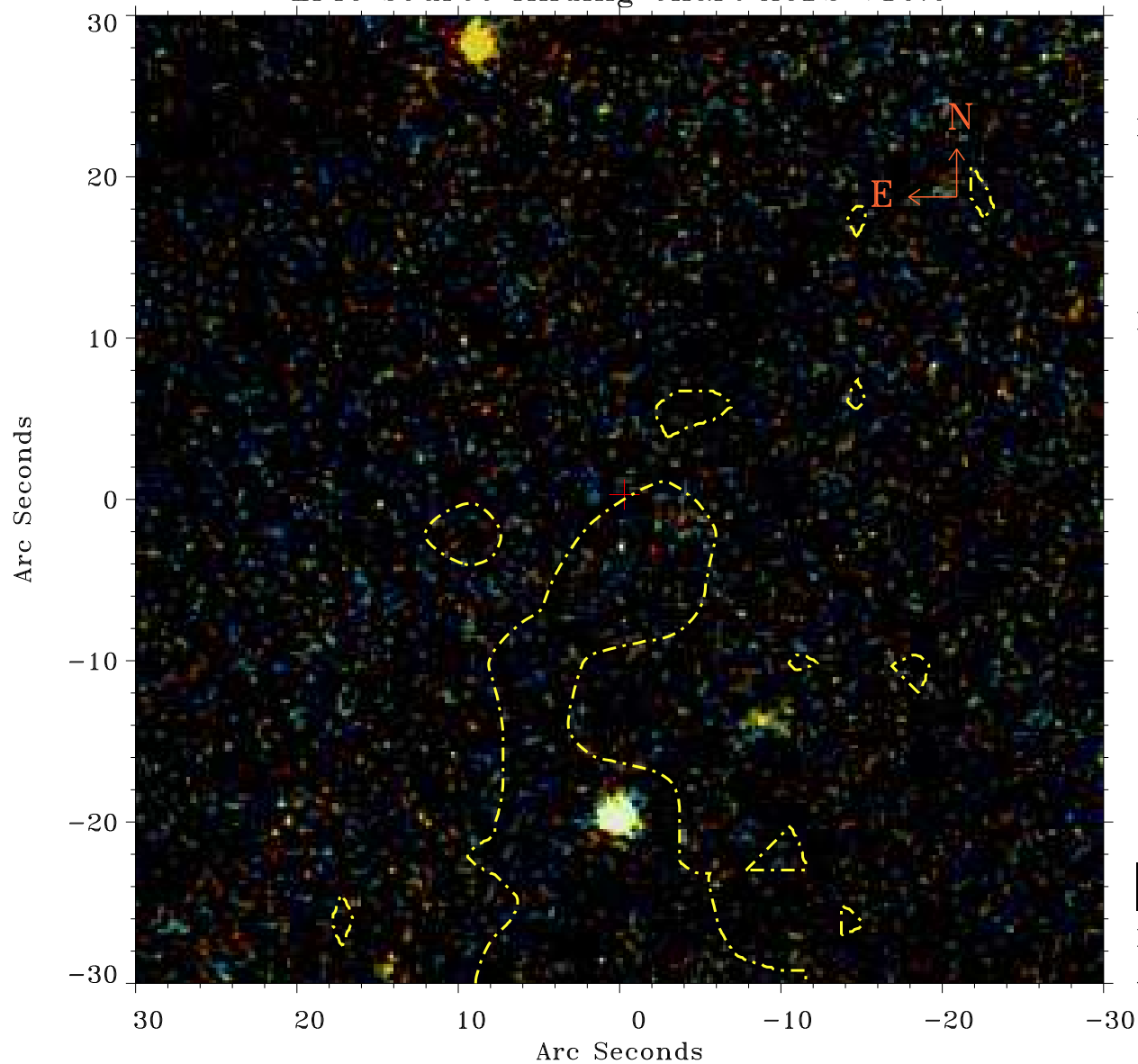


# EPIC source finding chart ACDS V10.0



Principal Investigator :

Dr Marguerite Pierre

XMM target name :

XXLn073

OBS ID : 677640132

Source number : 11

X-ray coordinates :

$\alpha$  : 02 11 51.02

$\delta$  : -05 06 32.1

Center coordinates :

$\alpha$  : 02 11 51.03

$\delta$  : -05 06 32.2

Plate reference :

Origin : PanSTARRS-DR1

Color coding :

z band ●

(z+g)/2 ●

g band ●

Contour levels (counts) :



XMM SSC

Apr 22 13:39:35 2019