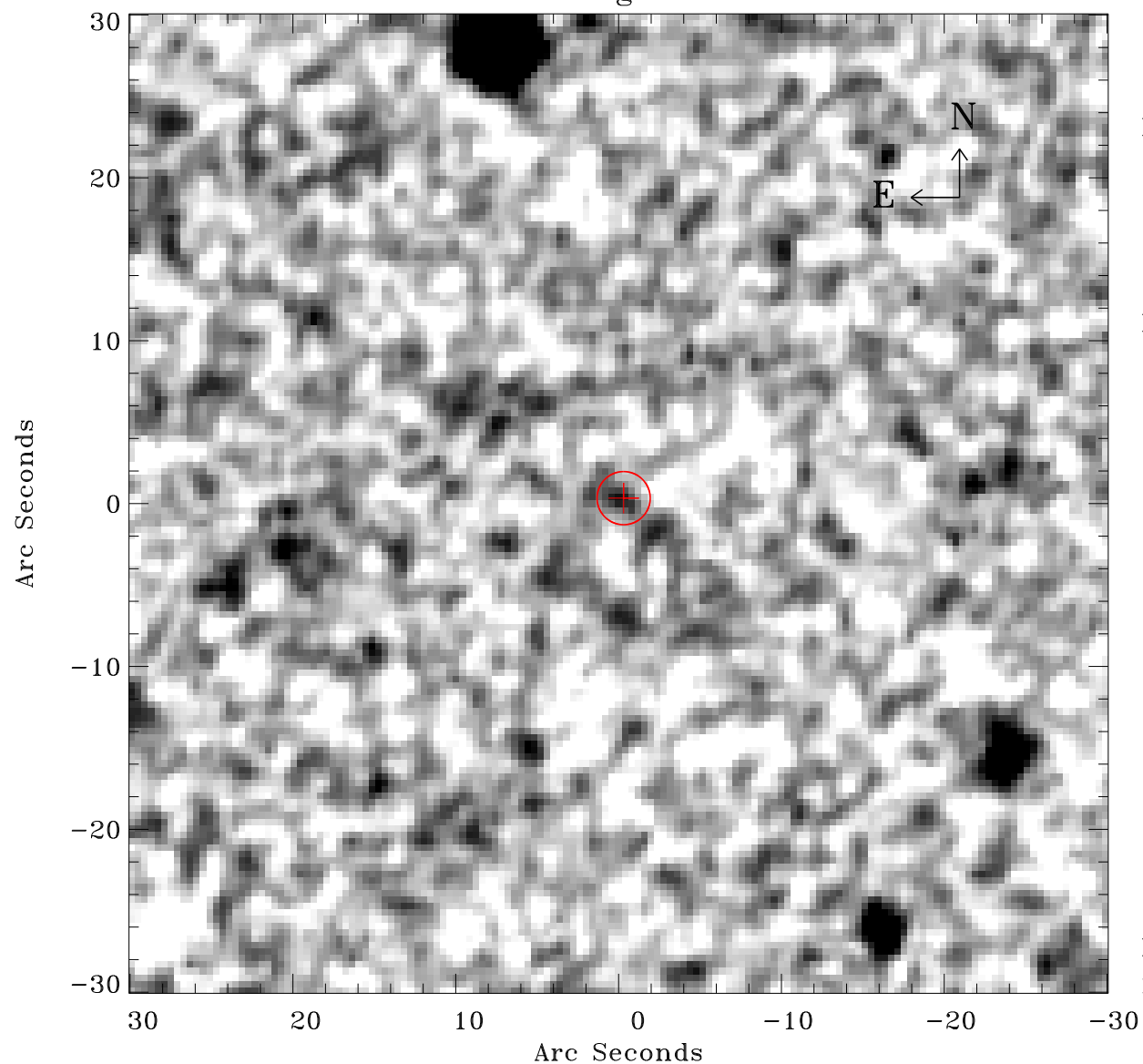


# EPIC source finding chart ACDS V10.0



Principal Investigator :

Dr Marguerite Pierre

XMM target name :

XXLs001

OBS ID : 677700140

Source number : 16

X-ray coordinates :

$\alpha$  : 23 14 03.24

$\delta$  : -53 32 00.3

Center coordinates :

$\alpha$  : 23 14 03.23

$\delta$  : -53 32 00.2

Plate reference :

Origin : CDS HIPs Network

Plate : MAMA srcj

Pixel : 0.40 "/pix

Error circle :

$R_{90}$  (") : 1.6

XMM SSC

May 2 09:30:46 2019