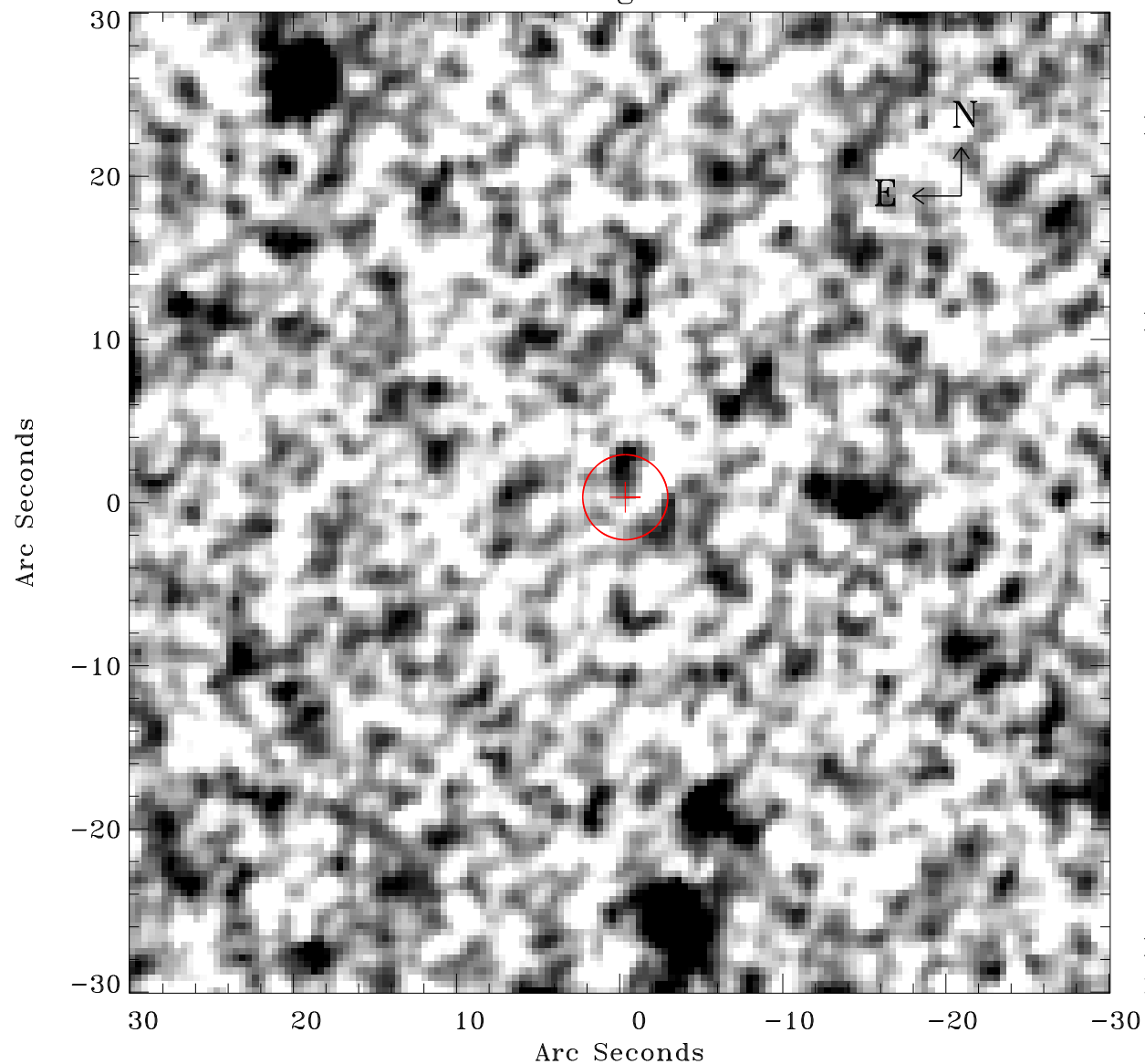


# EPIC source finding chart ACDS V10.0



Principal Investigator :

Dr Marguerite Pierre

XMM target name :

XXLs001

OBS ID : 677700140

Source number : 28

X-ray coordinates :

$\alpha$  : 23 11 45.22

$\delta$  : -53 18 49.3

Center coordinates :

$\alpha$  : 23 11 45.21

$\delta$  : -53 18 49.2

Plate reference :

Origin : CDS HIPs Network

Plate : MAMA srcj

Pixel : 0.40 "/pix

Error circle :

$R_{90}$  (") : 2.6

XMM SSC

May 2 09:29:41 2019