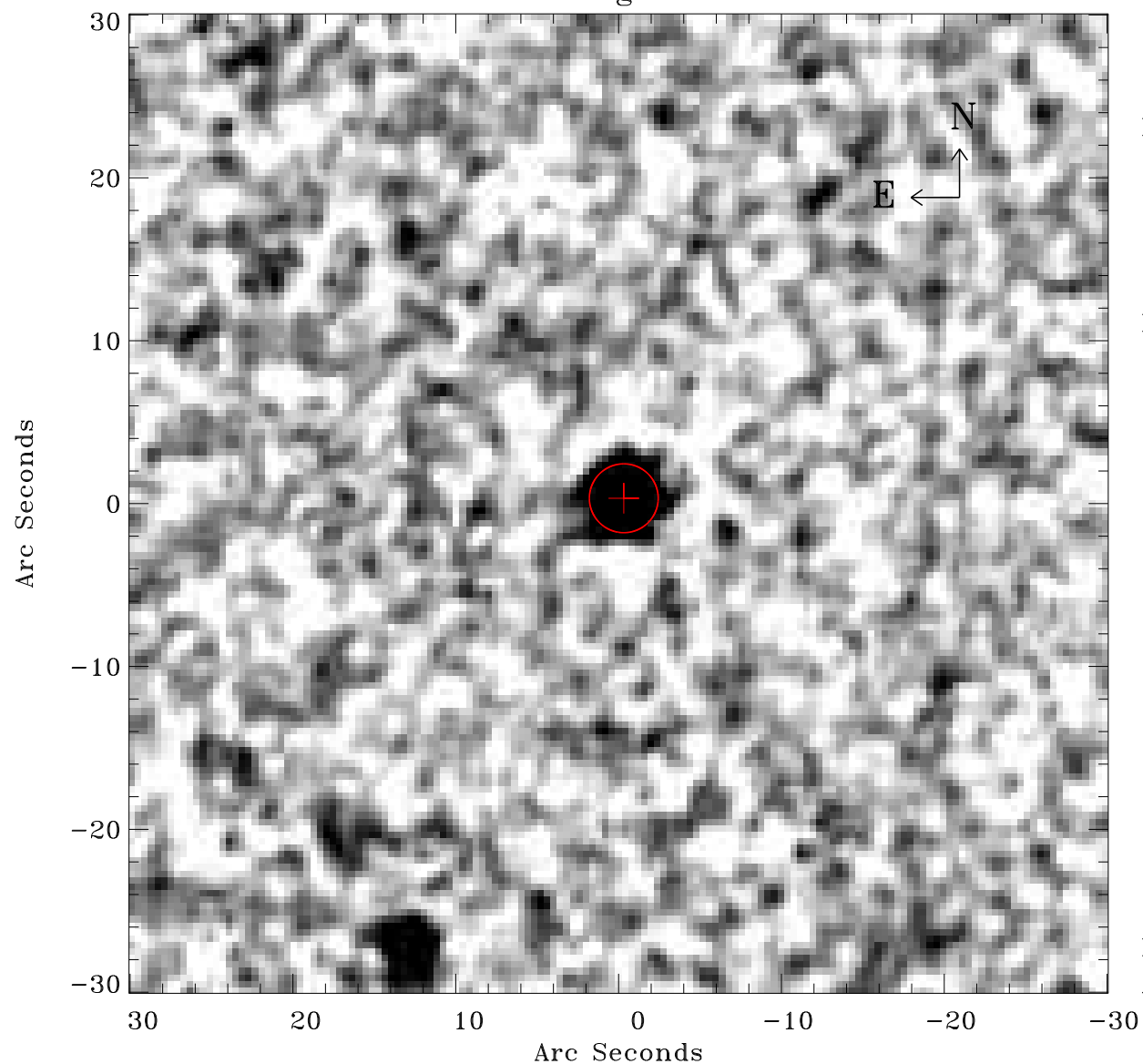


# EPIC source finding chart ACDS V10.0



Principal Investigator :

Dr Marguerite Pierre

XMM target name :

XBCS42b

OBS ID : 677830131

Source number : 7

X-ray coordinates :

$\alpha$  : 23 33 16.66

$\delta$  : -54 01 37.2

Center coordinates :

$\alpha$  : 23 33 16.65

$\delta$  : -54 01 37.1

Plate reference :

Origin : CDS HIPs Network

Plate : MAMA srcj

Pixel : 0.40 "/pix

Error circle :

$R_{90}$  (") : 2.1

XMM SSC

Apr 27 05:41:50 2019