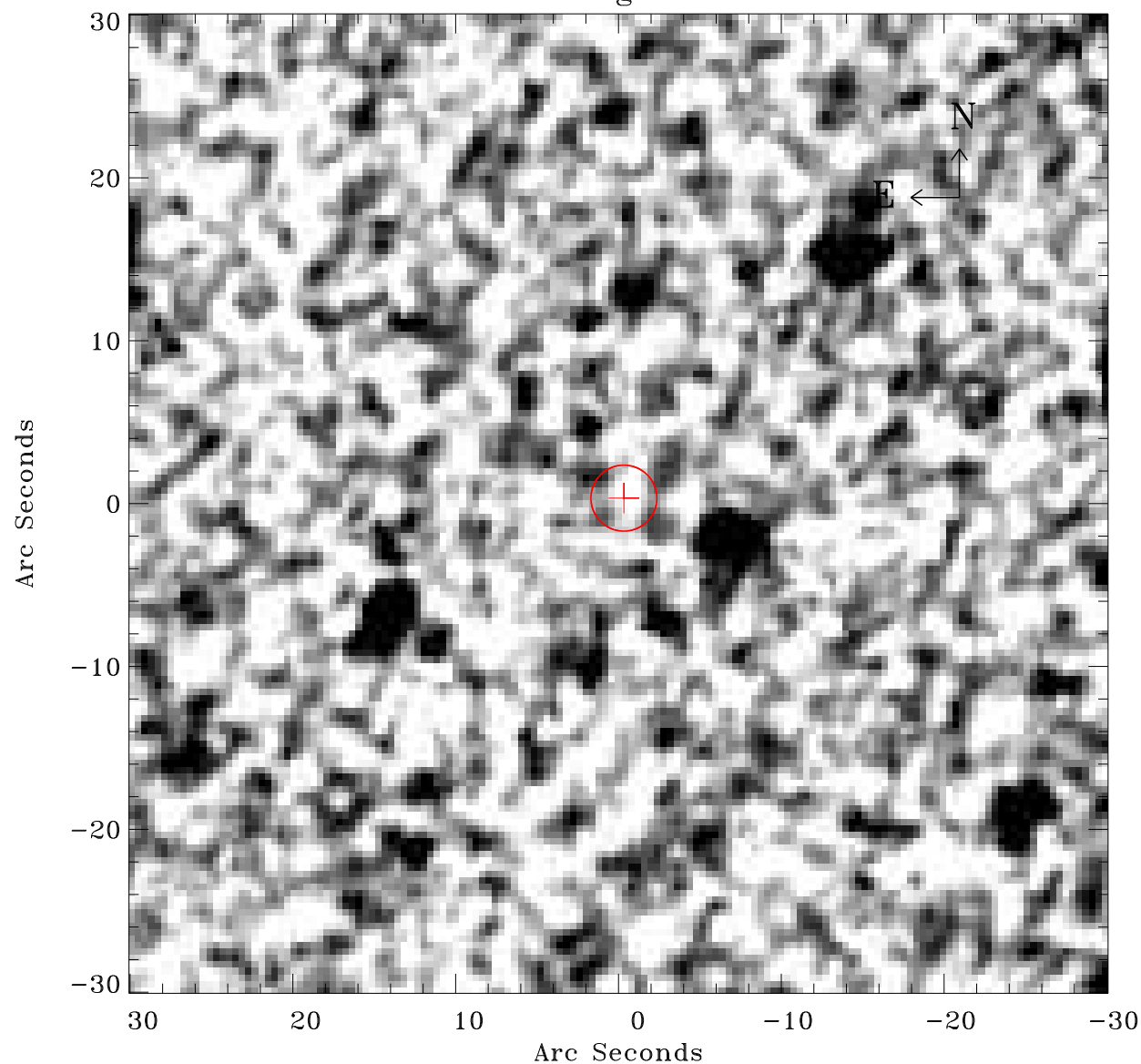


# EPIC source finding chart ACDS V10.0



Principal Investigator :

Dr Marguerite Pierre

XMM target name :

XBCS42b

OBS ID : 677830131

Source number : 9

X-ray coordinates :

$\alpha$  : 23 33 28.34

$\delta$  : -54 19 58.5

Center coordinates :

$\alpha$  : 23 33 28.33

$\delta$  : -54 19 58.4

Plate reference :

Origin : CDS HIPs Network

Plate : MAMA srcj

Pixel : 0.40 "/pix

Error circle :

$R_{90}$  (") : 2.0

XMM SSC

Apr 27 05:42:25 2019