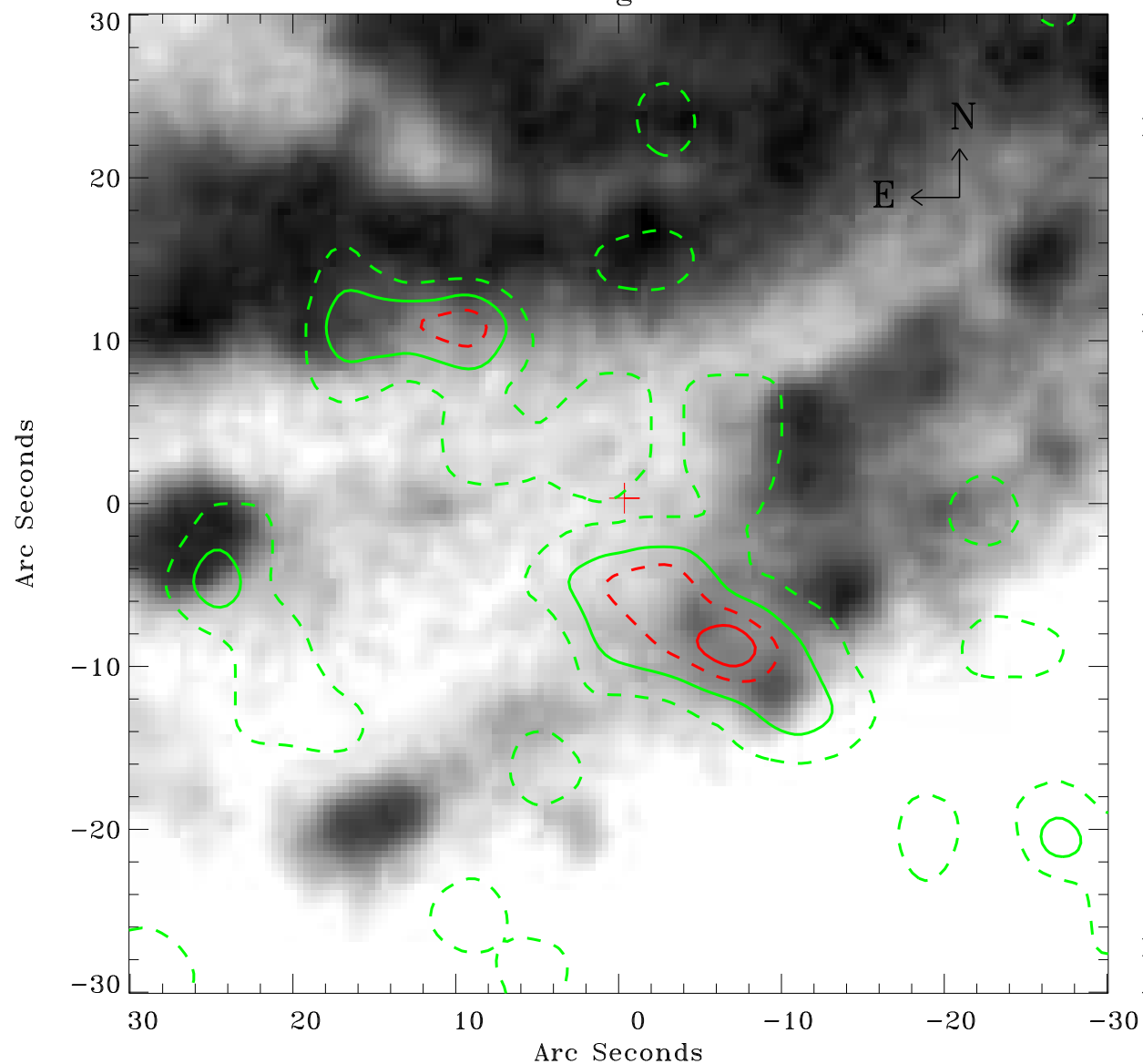


# EPIC source finding chart ACDS V10.0



Principal Investigator :

Dr Marguerite Pierre

XMM target name :

XBCS42b

OBS ID : 677830131

Source number : 20

X-ray coordinates :

$\alpha$  : 23 33 18.36

$\delta$  : -54 06 18.9

Center coordinates :

$\alpha$  : 23 33 18.36

$\delta$  : -54 06 18.8

Plate reference :

Origin : CDS HIPs Network

Plate : MAMA srcj

Pixel : 0.40 "/pix

Contour levels (counts) :

1.04E+00 2.22E+00

3.26E+00 4.11E+00

XMM SSC

Apr 27 05:42:00 2019