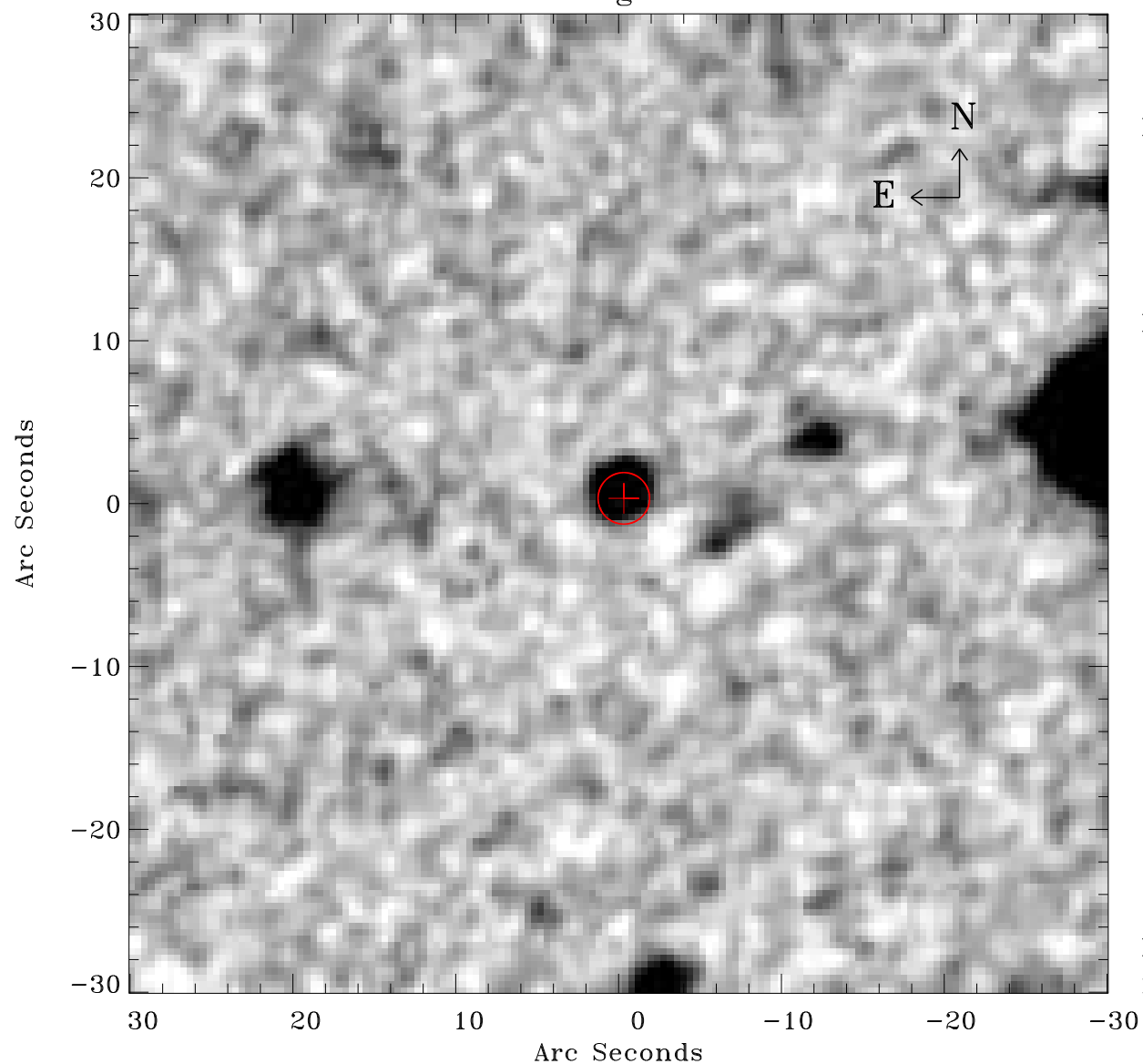


# EPIC source finding chart ACDS V10.0



Principal Investigator :

Dr Marguerite Pierre

XMM target name :

XBCS42b

OBS ID : 677830135

Source number : 5

X-ray coordinates :

$\alpha$  : 23 37 30.70

$\delta$  : -53 07 39.2

Center coordinates :

$\alpha$  : 23 37 30.69

$\delta$  : -53 07 39.1

Plate reference :

Origin : CDS HIPs Network

Plate : MAMA srcj

Pixel : 0.40 "/pix

Error circle :

$R_{90}$  (") : 1.6

XMM SSC

May 3 21:45:09 2019