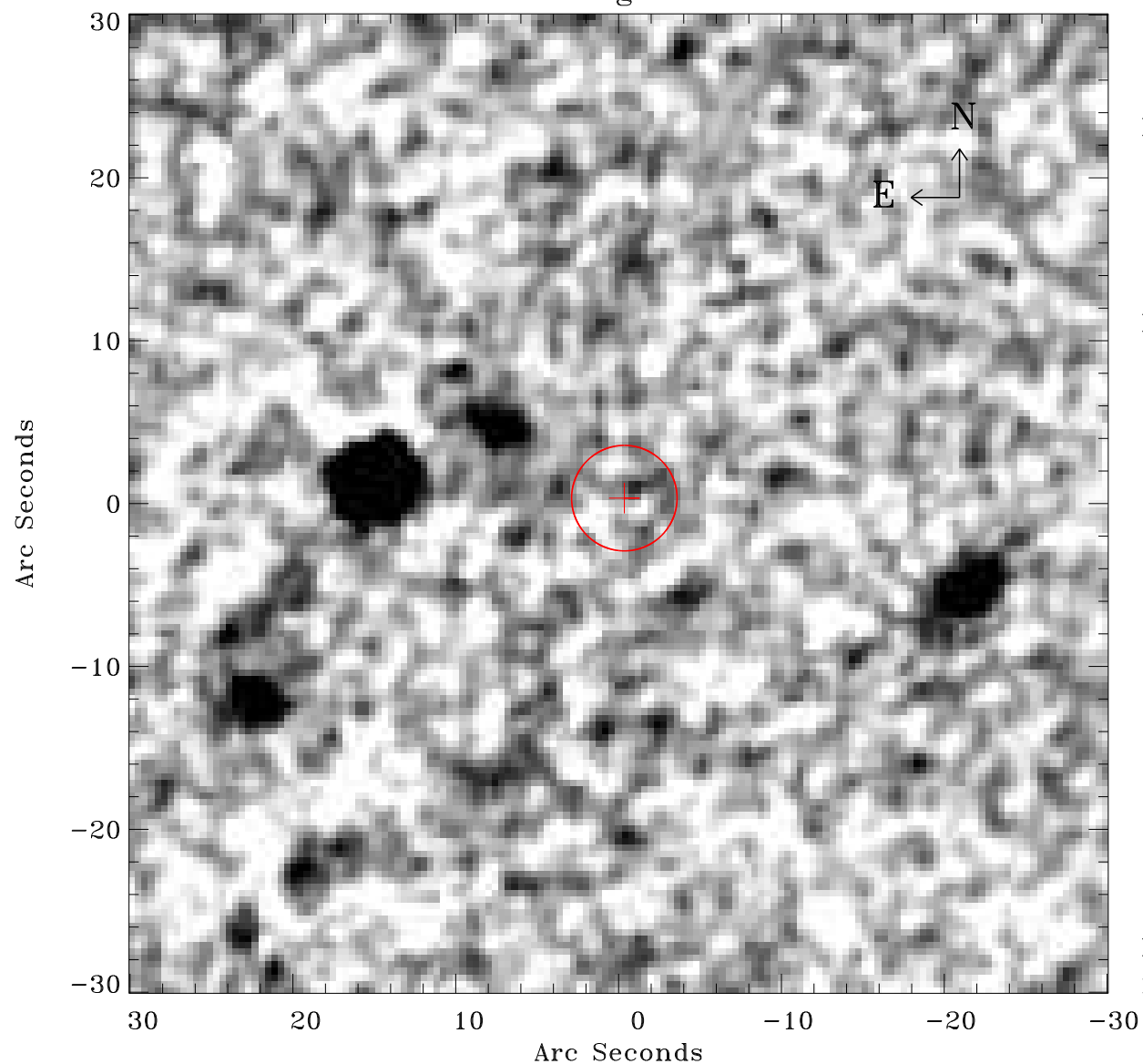


# EPIC source finding chart ACDS V10.0



Principal Investigator :

Dr Marguerite Pierre

XMM target name :

XBCS42b

OBS ID : 677830135

Source number : 31

X-ray coordinates :

$\alpha$  : 23 36 50.12

$\delta$  : -53 00 31.6

Center coordinates :

$\alpha$  : 23 36 50.11

$\delta$  : -53 00 31.5

Plate reference :

Origin : CDS HIPs Network

Plate : MAMA srcj

Pixel : 0.40 "/pix

Error circle :

$R_{90}$  (") : 3.2

XMM SSC

May 3 21:44:42 2019